

# American Panel

*Versatile, Dependable Walk-Ins & Blast Chillers*



**Uncompromising Quality**



# The American Panel difference

American Panel is your trusted manufacturer for all your cold storage, blast chilling and shock freezing needs. Building on over 55 years of family owned and operated heritage, American Panel provides versatile, dependable custom crafted walk-in coolers, freezers, combination cold rooms and blast chillers.



## Crafted For You

American Panel caters to exactly what you need. Each walk-in project is custom designed, crafted and assembled at the factory to verify it meets your exact specifications before shipping out to you.

**Don't compromise on quality.** American Panel is the industry's leader in cold storage rooms.

- 100% edge to edge expanded polyurethane foam
- Airtight gaskets - no sealants
- Premium door construction
- Exclusive controller/monitors
- Custom shapes, finishes & colors



# Qualifying Questions for Walk-Ins

Asking the right questions up front can save time and labor down the road. It allows for; less back and forth to the customer or site, pain point discovery and problem solving, verifies walk-ins are built within building or local regulations and gets the customer their perfect solution on budget and on time.



## Location

- How much space do you have to work with?
- Are there any wall or ceiling obstructions that need to be worked around?
- Will the floor need to be insulated or recessed?
- Verify door location, type and door swing.

## Use

- What will the unit be used for?
- What is the product load capacity needed for the walk-in?

## Utility

- What are the local building codes and how do they apply to this job?
- What are the electrical requirements for the walk-in and accessories?
- Where are the floor drains and condensate removal locations?

## Installation

- What is the job schedule and timeline for installation?
- Who are the job contacts and owners?
- What are the delivery location specs?
- Are there obstacles that could make installing difficult? *Stairs, elevators, small doors, etc.*



# Walk-In Segments

Walk-In coolers and freezers are a critical part to any kitchen and American Panel specializes in many segments throughout the industry. Everything from industrial food banks to correctional and specialty custom builds, we have done it all.



## Walk-In Segments/Industries

- Correctional & Government Installs
- Industrial & Food Banks
- Food Production Facilities
- K12, Colleges & Universities
- Healthcare & Hospitals
- Sports & Event Venues
- Grocery & Wholesale Clubs
- Convenience Stores
- Quick Serve
- Ghost Kitchens
- Brewery & Pubs - Tap Integration
- Fine Dining Restaurants
- Hotels & Hospitality
- Scientific & Test Chambers
- Environmental Testing
- Humidity-Controlled Dry & Clean Rooms
- Flower & Horticulture
- Mortuary
- Equipment Enclosures



Versatile, Dependable Walk-Ins and Blast Chillers

[www.americanpanel.com](http://www.americanpanel.com) | 352.245.7055

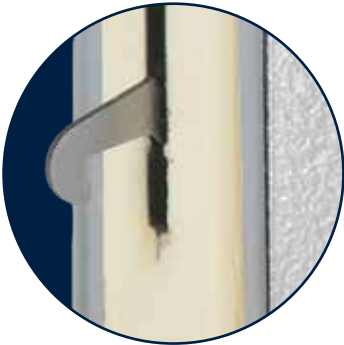
American Panel walk-ins are constructed of a fully foamed-in-place polyurethane foam that is between an interior and exterior metal skin. Foam is injected between these two skins and uniformly expands to fill all voids. This allows our panels to have a consistent R-value, edge to edge, and hold together without any additional fasteners.



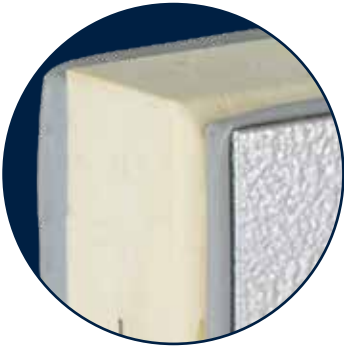
## The American Panel Difference



American Panel uses full perimeter gaskets foamed into the edge bend to create a true airtight seal without any use of silicone or caulk.



Cam locks ensure that all panels are aligned correctly and pulled together correctly to provide a consistent air tight seal.



Fully foamed-in-place with a male/female foamed channel for an exact fit and 100% consistent R-value panel connections.

### Full foam vs other designs

Full foamed-in-place edge to edge panels have more consistent R-values than other construction methods. Consistent R-values eliminate temperature variances which can lead to condensation and reduce walk-in life.

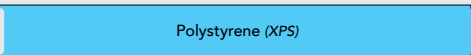
#### Consistent R-value



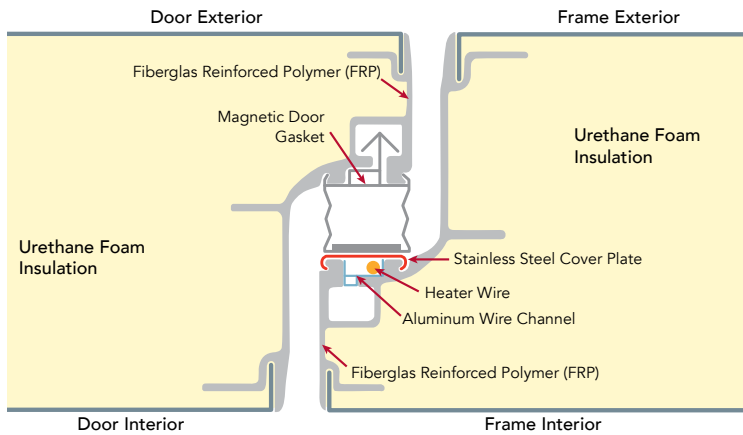
#### Lower R-value on edges



#### Low R-value



# Door Design



American Panel doors are built with every detail in mind. Our door perimeters are made from a fiberglass reinforced polymer (FRP) that does not transfer heat, will not corrode or deteriorate and is stronger than equivalent steel. It is the perfect door perimeter for walk-ins.

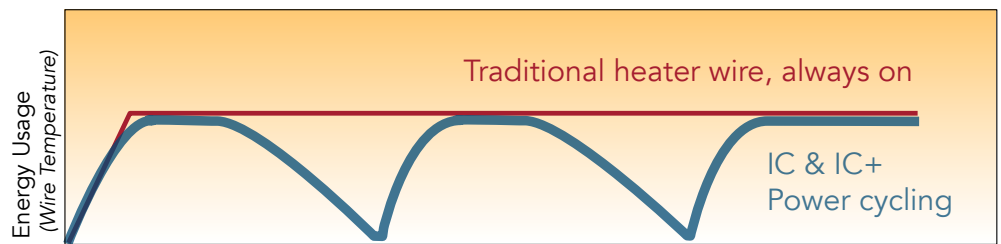
All American Panel doors are foamed-in-place and include our durable snap-in magnetic door gasket for a perfect tight seal.

## Door Frame Heater Wire

In the door frame we place our braided aluminum heater wire. The wire is braided for protection against bends and breaks, reducing any replacement issues. The wire is controlled by our exclusive IC or IC+ controller, that cycles it on and off to extend the life of the wire and saves on energy, reducing overall costs.



**Power cycling saves energy = Saves \$\$\$**

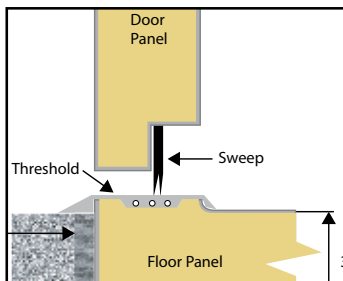


Heater wire on/off duration

## Additional Door Enhancements



Heated Windows



Adjustable Door Sweep



High Quality Hardware



Interior Ramp



Versatile, Dependable Walk-Ins and Blast Chillers

www.americanpanel.com | 352.245.7055

American Panel offers a variety of floors ranging from 600 lbs. per sf. static load all the way to 15,000+ with our AmeriTuff structural load floors. All floors come with our standard NSF bent metal cove for easy cleaning and can have a variety of finishes including diamond plate (with bent cove).

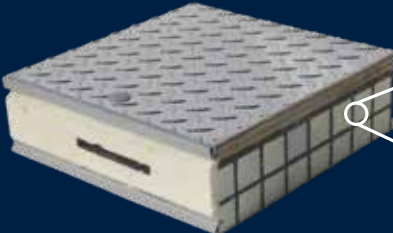


**Standard -**  
600-800 lbs./sf. static load



**Reinforced -**  
*Plywood underlayment*  
1,200 lbs./sf. static load

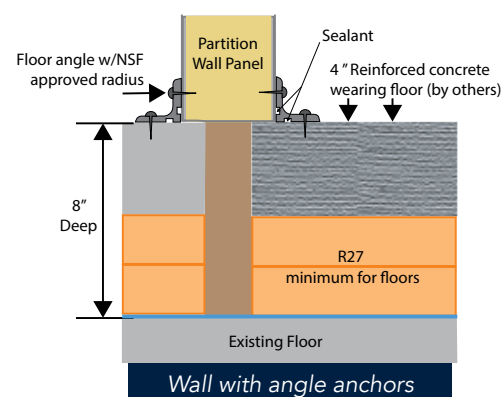
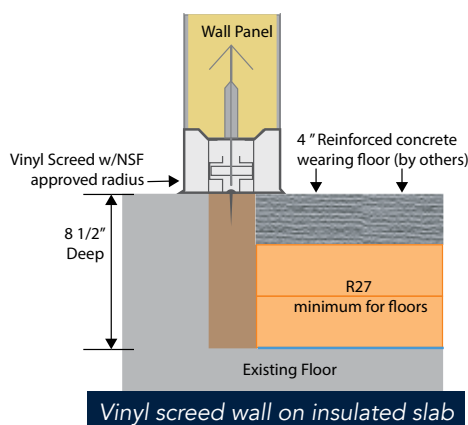
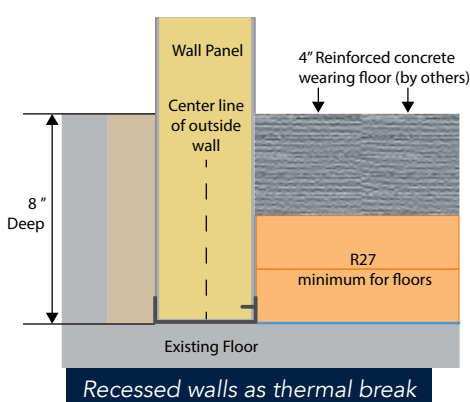
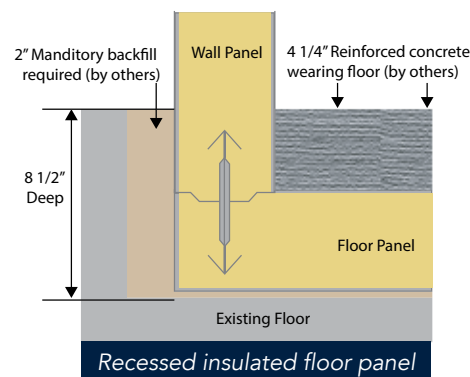
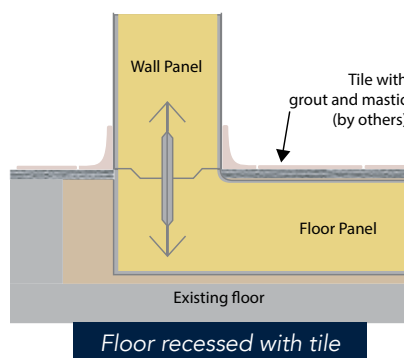
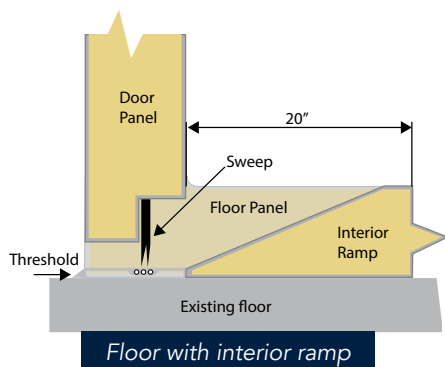
**AmeriTuff**  
**15,000 lbs./sf.**  
static load  
*\* Highest in the industry*



Fiberglass reinforced grid foamed-in-place & plywood underlayment

## Common Floor Design/Options

American Panel can provide hundreds of options for floor configurations based on your exact need, including seismic and hurricane support. See some of the most common options below, but don't be limited by what is here, contact our personal consultants for your perfect floor solution.





# IC & IC+ Walk-In Controller/Monitors

Whether you choose our standard IC or the full featured IC+ controller/monitor, you are guaranteed to get the quality and dependability that American Panel is known for. At American Panel we are constantly striving to push the envelope when it comes to offering the latest technologies; like the **Intelligent Controller (IC)** and the more advanced **Intelligent Controller Plus (IC+)**. Form and function are combined like never before to give you unparalleled features and energy savings.

Compare them below and find out which American Panel controller, IC or IC+, is the perfect companion to your walk-in cooler or freezer.

**Exclusive to American Panel on New Walk-Ins.**



Feature	IC	IC+
Energy Saving Cyclic Door Heater Control & Monitoring	✓	✓
Digital thermometer	✓	✓
Audio/visual temperature alarm	✓	✓
High & Low Alarm Set Points	✓	✓
Integrated Dry Contacts (1A @ 24VAC, 1A @ 30VDC)	✓	✓
Adaptive temperature auto programming	✓	✓
Integrated light switch	✓	✓
3 digit LED display	✓	✗
Easy to read LCD display	✗	✓
Door Monitor (w/ Ajar Alarm & Auto Lights On/Off Capability)	✗	✓
USB interface	✗	✓
Wi-Fi Capable for HACCP & Remote Notification	✗	✓
Battery Backup & power failure alarm	✗	✓
Panic alarm w/ internal press switch	Optional	Optional
iOS & Android Bluetooth setup app  	✗	✓
Email and email-to-text notifications for alarms	✗	✓
Dual on screen temperature monitor	✗	Optional



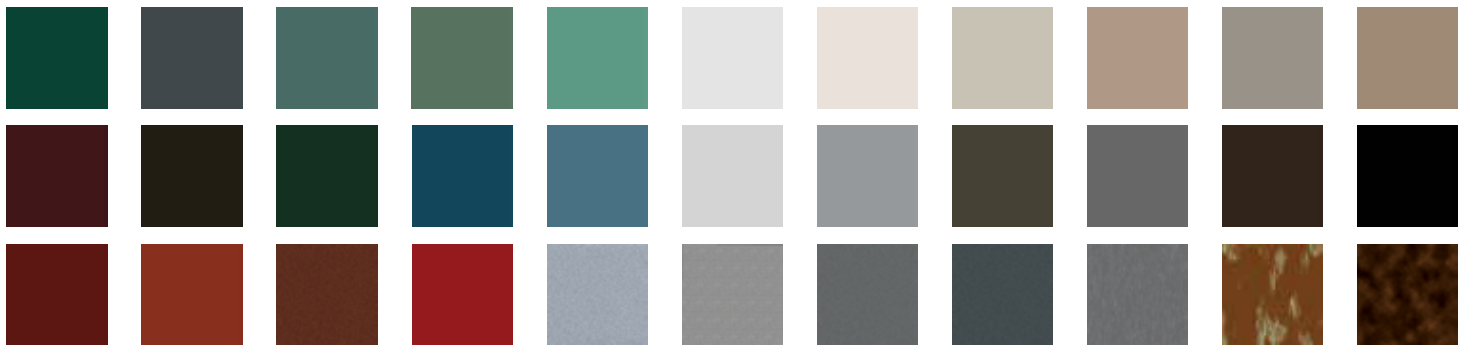


# Walk-In Finishes/Options

American Panel offers a wide variety of custom finishes, metals and options to make your walk-in completely custom to you, your needs and decor. Below are just some of the colors and options available to make your walk-in truly custom to you.



## Designer Colors/Finishes



## Common Options/Accessories



LED light



Integrated Kickplate



View Window



Integral Interior Ramp



Hinged Curtain



Bumper Rail



Vertical Beading



Spring Hinges

Versatile, Dependable Walk-Ins and Blast Chillers

[www.americanpanel.com](http://www.americanpanel.com) | 352.245.7055



# Blast Chiller/Shock Freezer - Basics

Why is blast chilling/shock freezing a critical component in kitchens? Blast chilling and shock freezing is the process of lowering the temperature of food extremely quickly without losing moisture or quality. Rapidly reducing food temperatures ensures that it is safer, lasts longer and retains all the same quality and consistency of the originally prepared dish. Here are some other benefits of blast chilling/shock freezing.



## Safety & HACCP

Track food temp and times to ensure safe food life cycle.



## Time & Labor Saving

Reduce prep time and production cost by prepping ahead.



## Retain Food Quality

Rapid chilling preserves the original quality, texture & moisture.



## Extended Product Shelf Life

Increase shelf life up to 5 days with chilling and months with freezing.



## Wider Menu Choices

Extend seasonal items longer, buy in bulk.



## Less Food Waste

Make use of leftovers and extend product life.

## Blast Chilling Process



## Fast, Safe Chilling

The faster food is chilled the less time it spends in the optimal bacteria growth temperatures. Creating safer chilled food than traditional refrigerator chilling. 160°F to 38°F in less than 90 minutes, the best in the industry.

## Shock Freezing Process



## Micro Crystals vs Macro

Managing the growth of ice crystals when freezing is how HURRICHILL ensures high quality frozen products. The smaller the crystals the less cellular damage. To do that you need a fast freezing cycle.



Versatile, Dependable Walk-Ins and Blast Chillers

[www.americanpanel.com](http://www.americanpanel.com) | 352.245.7055

# Blast Chiller Segments/Opportunities

Blast chillers and shock freezers have grown in popularity given all the advantages that rapid preservation can add to a foodservice production. Everything from grocery stores to large food banks and schools have discovered all the benefits that blast chillers can provide.

## The Production Process

### Blast Chilling



### Shock Freeze



Schools & University



Restaurant/Dining



Batch Cooking



Ghost Kitchens



Grocery/Retail



Meal Kits



C-Store/Grab-n-Go



Bakery/Confectionery

Versatile, Dependable Walk-Ins and Blast Chillers

[www.americanpanel.com](http://www.americanpanel.com) | 352.245.7055



# Blast Chiller/Shock Freezer - Controller

## The easiest controller to use and program!



Additional options like thaw cycle, sanitize (cabinet only), manual coil defrost, HACCP reports, heated probes and more all available on screen. Add on the available wi-fi adapter and be able to get this info remotely.



Lower fan speed for delicate items like leafy greens, vegetables and pastries.



Full fan speed and low temperature for dense items like meats, soups or beans



Fast freezing down to 0°F, perfect for any item that needs to freeze quickly.



One touch customizable quick start function. Push one button, and off you go.



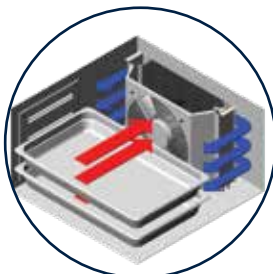
Versatile, Dependable Walk-Ins and Blast Chillers

[www.americanpanel.com](http://www.americanpanel.com) | 352.245.7055

**What makes a HURRICHiLL system so special?** We take particular care to make sure the system is built specifically for rapid chilling, including the features and details that are custom to the unique environments that blast chillers and shock freezers work in. Combine that with 50+ years of cooling experience and it allows us to provide the best blast chiller in the industry with the largest product offering.

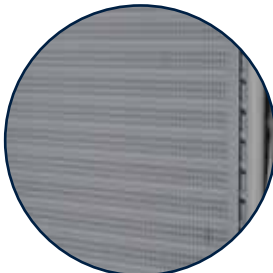
### Reverse Airflow Design

Pulls BTU's out of the product instead of blowing air across it. Increases efficiency and reduces chill time.



### E-Coated Coils

Special coil coating that protects against corrosion and damage.



### Easy 7" LCD Controls

7" Touchscreen control, easy to use, easy to train. One button operation.



### Fast Chill & Freeze Times

Chill in under 90 minutes and freeze in under 240. We set the standard for blast chilling/shock freezing.



### 40+ Models Available

The most diverse set of blast chillers ever offered. We have the right size for your operation



# Offering - Standard Models



Model	AP3BCF30-1-P	AP5BCF45-2-P	AP7BCF70-2	AP7BCF70-2-C	AP10BCF100-2	AP12BCF110-3
NUMBER OF PANS*	3	5	7/14	7/7	10	12/24
CHILLING CAPACITY [LBS] (160°F TO 38°F WITHIN 90 MIN)	30	50	70	70	100	110
FREEZING CAPACITY [LBS] (160°F TO 0°F WITHIN 240 MIN)	18	30	60	42	60	66
ELECTRICAL (V/H/P, AMPS)	120/60/1, 9.0A	208/60/1, 7.0A	208/60/1, 12.0A	208/60/1, 12.0A	208/60/1, 12.0A	208/60/3, 10.0A



Model	AP20BCF200-2	AP20BCF200-3	AP24BC250-3	AP24BCF300-3	AP24BC250-R-3	AP24BCF300-R-3
NUMBER OF PANS*	1 MOBILE RACK	1 MOBILE RACK	1 MOBILE RACK	1 MOBILE RACK	1 MOBILE RACK	1 MOBILE RACK
CHILLING CAPACITY [LBS] (160°F TO 38°F WITHIN 90 MIN)	200	200	250	300	250	300
FREEZING CAPACITY [LBS] (160°F TO 0°F WITHIN 240 MIN)	120	120	-	180	-	180
ELECTRICAL (V/H/P, AMPS)	208/60/1, 8.0A	208/60/3, 19.5A	208/60/3, 8.0A	208/60/3, 8.0A	208/60/3, 8.0A	208/60/3, 8.0A

\* Where multiple numbers are shown the first number refers to 18" x 26" sheet pans and the second number refers to 12" x 20" steam table pans. Single numbers refer to steam table pans.



Versatile, Dependable Walk-Ins and Blast Chillers

www.americanpanel.com | 352.245.7055

# Sustainability Just Got Cooler

**NEW!**



**HURRICHILL™**

**AP3-P & AP5-P**

**Compact R290 Blast Chillers & Shock Freezers**

Same HURRICHILL performance with a more sustainable design. New easier to use controls, R290 environmentally friendly refrigeration system, and more versatile modes of chilling. *The best compact blast chillers just got cooler.*



## Environmentally friendly low impact refrigerant system!

R290 refrigerant has one of the lowest GWP and ODP of any refrigerant. R290 is the **always compliant** refrigerant for the next era of sustainable refrigeration systems.

<b>R404a</b>
GWP Global Warming Potential
<b>3390</b>
ODP Ozone Depletion Potential
<b>0</b>

<b>R448a</b>
GWP Global Warming Potential
<b>1320</b>
ODP Ozone Depletion Potential
<b>0</b>

<b>R290</b>
GWP Global Warming Potential
<b>4</b>
ODP Ozone Depletion Potential
<b>0</b>

Versatile, Dependable Walk-Ins and Blast Chillers

[www.americanpanel.com](http://www.americanpanel.com) | 352.245.7055



# Modular Blast Chillers



## Self-Contained Modular 200 lb. capacity

The first 200lb. self-contained blast chiller that can handle any current combi rack < 73" tall. Built with everyone from designer to service provider in mind, the XL version of our popular AP20 model is easy to install, easy to use and easy to service.

- Quick connects for easy install
- Can handle any popular combi cart\*
- Self-Contained refrigeration system
- Reverse airflow cooling fan design
- Pre-charged and ready to go
- 7" color touchscreen display with one button operation

\*Any combi cart under  
73" tall x 32" wide x 40" deep

## Remote Modular Blast Chillers

Modular blast chillers are built similar to our quality walk-ins, with components that are assembled on site. This allows for easy transportation up stairwells, on elevators and into difficult to reach areas.



- Modular design for easy install in place
- Available in 1, 2 or 3 cart capacities
- Available chill capacity from 200 - 1,590 lbs.
- American Panel quality 4" walls
- Reverse airflow cooling fan design
- E-coated coils for corrosion resistance
- 7" color touchscreen display with one button operation



# Component Package - Integrated

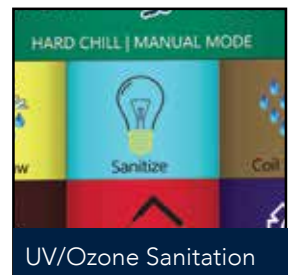
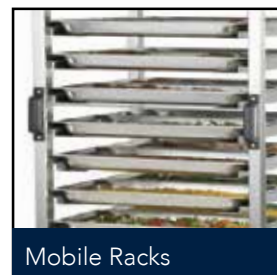
Save space and labor by integrating your blast chiller into your walk-in. Built as part of the walk-in, you can blast chill and pass the cart directly into the walk-in for long term storage.

- Built integrated into the walk-in
- Pass-thru design
- No need for stand-alone units
- Remote refrigeration system
- 7" color touchscreen display with one button operation
- Up to 1,380 lb of product chilled in 90 min
- Fully customizable to fit your plans
- Allows seamless integration into any kitchen design



## Options - All Models

Make your HURRiCHiLL custom to what you need with options and enhancements. Connectivity to sanitation, HURRiCHiLL has all of your options covered.



Versatile, Dependable Walk-Ins and Blast Chillers

[www.americanpanel.com](http://www.americanpanel.com) | 352.245.7055



# Warranties - We Have You Covered

## 10 Year Warranty On Walk-In Panels



## 3 Year Warranty On All HURRiCHiLL Blast Chillers & Shock Freezers



## We are there for you

At American Panel you are always met with superior personal service. We know that every project is individual and we will always be there personally to ensure all your questions are met.

### Contact Us

PH: 352.245.7055  
Sales@americanpanel.com

### Follow Us



@americanpanel



@americanpanelcorp



@american-panel-corp



@AmericanPanelCorporation

### Sales Territory Managers

---



**Jesse Erskin**  
National Sales Manager  
Jesse@americanpanel.com



**Pam Howard**  
Senior Territory Manager  
TN, NC, SC, GA, AL, W-FL  
PamH@americanpanel.com



**Ben Prosser**  
Internal Sales Manager  
Benjamin@americanpanel.com



**Megan West**  
Territory Manager  
FL, ME, VT, NH, MA, CT, RI  
Megan@americanpanel.com



**Dawn Maisto**  
Territory Manager  
WY, UT, CO, AZ, TX, NM, AR, LA, MS, S-FL  
Dawn@americanpanel.com



**Jessica Hancock**  
Territory Manager  
MI, IN, N-IL, WI, PA, OH, WV, KY  
Jessica@americanpanel.com



**Tina Richter**  
Territory Manager  
OK, TX, VA, MD, S-WV, DC  
Tina@americanpanel.com



**Sherri Ebel**  
Territory Manager  
CA, NV, ND, SD, NE, KS, MO, IA, MN,  
S-IL  
Sherri@americanpanel.com



**Michelle Mapes**  
Territory Manager  
WA, OR, ID, MT, AK, HI, NJ, DE, E-PA,  
NY, NYC  
Michelle.Mapes@americanpanel.com

### Parts & Service

---

#### Parts Department

1.800.327.3015  
Parts@americanpanel.com

#### Service Department

1.800.327.3015  
ServiceDept@americanpanel.com



## American Panel

Versatile, Dependable Walk-Ins & Blast Chillers

5800 S.E. 78th Street • Ocala, Florida 34472

Ph. 352.245.7055

Email: [Sales@americanpanel.com](mailto:Sales@americanpanel.com)

[www.americanpanel.com](http://www.americanpanel.com)

