



Your Solutions Partner

DUKE MANUFACTURING

Steamtables



Contents

- Intro
- Contacts 3
- Steamtables 4
 - Aerohot™ 5
 - Thurmaduke™ 8
- Accessories 14

 **WARNING for CA residents:** go to www.dukemfg.com/prop65 for Prop 65 warning [all products in this brochure]



Contacts

For Warranty, Parts and Service

DUKE CORPORATE, CANADA, LATIN AMERICA

2305 N. Broadway
St. Louis, MO 63102
PHONE: 314.231.1130
TOLL FREE: 800.735.3853

customercare@dukemfg.com

DUKE EMEA - EUROPE, MIDDLE EAST, AFRICA, RUSSIA

Duke Manufacturing C.R. s.r.o.
Logistický areál D 11, Hala DC06
Nehvizdy 1100
PSČ 250 81
Czech Republic
PHONE: (+420) 323.608.193

service.emea@dukemfg.com

DUKE ASIA PACIFIC

Duke Manufacturing
No.3 Building
Lane 28, Yu Lv Road
Malu Town, Jiading District
Shanghai 201801, China
PHONE: +86.21.591.53525 / 591.53526

service.asiapac@dukemfg.com



Steamtables

Efficient and economical, Duke's complete line of steamtables is available in both electric and gas hot food models. We offer a wide range of sizes with a variety of standard and optional features.



Conduction

Heat is transferred directly to the pan and then to the food. Conduction uses physical contact to transfer heat.

Passive Venting

Provides a non-mechanically controlled form of adjusting heat profiles in the space. It allows hot, stale, moist air to escape without influence.

Steam

Compartments, or wells, are filled with hot water. Electric elements or gas jets under the stainless steel wells are turned on to create the steam.

Does Not Cook

For use in holding food at safe, warm temperatures.



Aerohot®

STANDARD FEATURES

- Well configurations of (2) to (5)
- 1/2" thick reversible poly carving board on stainless steel
- All stainless steel bodies, undershelves, legs & adjustable plastic feet
- 1 year parts and labor warranty
- Available in one of four well styles

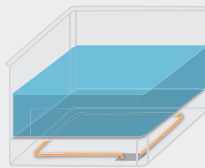


OPTIONS

ELECTRIC

Exposed Elements

- Infinite switch heat controls
- Spillage pans required for wet heat
- Galvanized steel hot food wells standard



Ideal for...

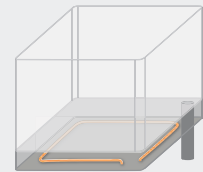
Price conscious operators that appreciate the flexibility of using wet or dry heat.

Stationary on Legs
E302 - E305

Portable on Casters
EP302 - EP305

Sealed Wells

- Infinite switch heat controls
- Sealed stainless steel hot food wells with individual drain valves



Ideal for...

Operators who prefer convenient clean up and ease of operation without the need for a spillage pan.

Stationary on Legs
E302SW - E305SW

Portable on Casters
EP302SW - EP305SW

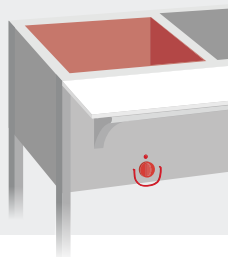
NATURAL GAS OR PROPANE

Individual Wells

- Galvanized steel radiation plate in each compartment
- Gas pressure regulator
- Vented spillage pans recommended for wet heat

Ideal for...

Operators in geographic areas where using gas appliances are more economical or convenient



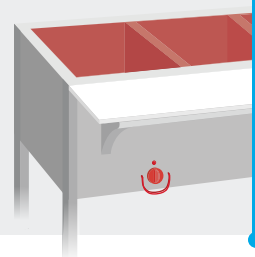
Stationary on Legs
302 - 305

Wet Bath

- 18 gauge stainless steel Bain Marie style food well
- 1" cast brass drain and valve
- Gas pressure regulator

Ideal for...

Operators whose menus require holding more dense product such as taco or Asian concepts



Stationary on Legs
WB302 - WB305

Aerohot™ Electric—Exposed & Sealed



| Part # | Wells | Sealed/ Exposed | Specifications | | | | | | | | | Voltage | Amps | NEMA |
|----------------|-------|--------------------|----------------|-------|---------|------|--------|------|-----------------------|---------|-----------|---------|------|-------|
| | | | Length | | Width | | Height | | Cube Crated Ft. | Weight | | | | |
| | | | in | cm | in | cm | in | cm | | lbs | kg | | | |
| E302/EP302 | 2 | Exposed | 30 3/8 | 77.2 | 22 7/16 | 57.1 | 34 | 86.4 | 23.4 | 81/90 | 36.8/40.9 | 120 | 8.3 | 5-15 |
| | | | | | | | | | | | | 208 | 7.2 | 6-20 |
| | | | | | | | | | | | | 240 | 6.3 | 6-20 |
| E303/EP303 | 3 | Exposed | 44 3/8 | 112.8 | 22 7/16 | 57.1 | 34 | 86.4 | 32.5 | 107/114 | 48.6/51.8 | 120 | 12.5 | 5-15 |
| | | | | | | | | | | | | 208 | 10.8 | 6-20 |
| | | | | | | | | | | | | 240 | 9.4 | 6-20 |
| E304/EP304 | 4 | Exposed | 58 3/8 | 148.3 | 22 7/16 | 57.1 | 34 | 86.4 | 41.5 | 138/144 | 62.7/65.5 | 120 | 16.7 | L5-30 |
| | | | | | | | | | | | | 208 | 14.4 | 6-20 |
| | | | | | | | | | | | | 240 | 12.5 | 6-20 |
| E305/EP305 | 5 | Exposed | 72 3/8 | 183.9 | 22 7/16 | 57.1 | 34 | 86.4 | 50.5 | 165/172 | 75.0/78.2 | 120 | 20.8 | L5-30 |
| | | | | | | | | | | | | 208 | 18.0 | L6-30 |
| | | | | | | | | | | | | 240 | 15.6 | 6-20 |
| E302SW/EP302SW | 2 | Sealed | 30 3/8 | 77.2 | 22 7/16 | 57.1 | 34 | 86.4 | 23.4 | 81/90 | 36.8/40.9 | 120 | 12.5 | 5-15 |
| | | | | | | | | | | | | 208 | 7.2 | 6-20 |
| | | | | | | | | | | | | 240 | 6.3 | 6-20 |
| E303SW/EP303SW | 3 | Sealed | 44 3/8 | 112.8 | 22 7/16 | 57.1 | 34 | 86.4 | 32.5 | 107/114 | 48.6/51.8 | 120 | 18.8 | L5-30 |
| | | | | | | | | | | | | 208 | 10.8 | 6-20 |
| | | | | | | | | | | | | 240 | 9.4 | 6-20 |
| E304SW/EP304SW | 4 | Sealed | 58 3/8 | 148.3 | 22 7/16 | 57.1 | 34 | 86.4 | 41.5 | 138/144 | 62.7/65.5 | 120 | 25.0 | 5-50 |
| | | | | | | | | | | | | 208 | 14.4 | 6-20 |
| | | | | | | | | | | | | 240 | 12.5 | 6-20 |
| E305SW/EP305SW | 5 | Sealed | 72 3/8 | 183.9 | 22 7/16 | 57.1 | 34 | 86.4 | 50.5 | 165/172 | 75.0/78.2 | 120 | 31.3 | 5-50 |
| | | | | | | | | | | | | 208 | 18.0 | L6-30 |
| | | | | | | | | | | | | 240 | 15.6 | 6-20 |

NOTE: Contact Factory for 3-phase electrical requirements and other options. Electric values & plug configurations change for 3 phase or when adding electric options.

Aerohot™ Gas



| Part # | Wells | Gas/Electric | Specifications | | | | | | | | | |
|--------|-------|--------------|----------------|-------|---------|------|--------|------|-----------------|--------|------|--------|
| | | | Length | | Width | | Height | | Cube Crated Ft. | Weight | | BTU's |
| | | | in | cm | in | cm | in | cm | | lbs | kg | |
| 302 | 2 | Gas | 30 3/8 | 77.2 | 22 7/16 | 57.1 | 34 | 86.4 | 23.4 | 92 | 41.8 | 5,000 |
| 303 | 3 | Gas | 44 3/8 | 112.8 | 22 7/16 | 57.1 | 34 | 86.4 | 32.5 | 109 | 49.6 | 7,500 |
| 304 | 4 | Gas | 58 3/8 | 148.3 | 22 7/16 | 57.1 | 34 | 86.4 | 41.5 | 139 | 63.2 | 10,000 |
| 305 | 5 | Gas | 72 3/8 | 183.9 | 22 7/16 | 57.1 | 34 | 86.4 | 50.5 | 166 | 75.5 | 12,500 |

NOTE: Specify Natural or Propane

Aerohot™ Wetbath

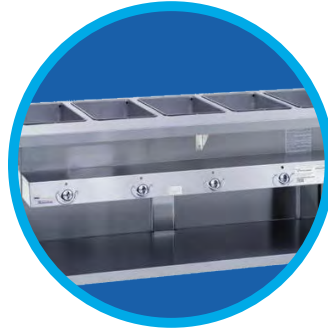


| Part # | Wells | Gas/Electric | Specifications | | | | | | | | | |
|--------|-------|--------------|----------------|-------|---------|------|--------|------|-----------------|--------|------|--------|
| | | | Length | | Width | | Height | | Cube Crated Ft. | Weight | | BTU's |
| | | | in | cm | in | cm | in | cm | | lbs | kg | |
| WB302 | 2 | Gas | 30 3/8 | 77.2 | 22 7/16 | 57.1 | 34 | 86.4 | 27.0 | 110 | 49.9 | 15,000 |
| WB303 | 3 | Gas | 44 3/8 | 112.8 | 22 7/16 | 57.1 | 34 | 86.4 | 38.1 | 135 | 61.2 | 15,000 |
| WB304 | 4 | Gas | 58 3/8 | 148.3 | 22 7/16 | 57.1 | 34 | 86.4 | 49.2 | 160 | 72.6 | 27,500 |
| WB305 | 5 | Gas | 72 3/8 | 183.9 | 22 7/16 | 57.1 | 34 | 86.4 | 60.2 | 195 | 88.4 | 27,500 |

NOTE: Specify Natural or Propane

STANDARD FEATURES

- Durable, fully welded steel body enclosed on 3 sides
- 16 gauge stainless tops
- Well configurations of (2) to (6); (3) to (6) on portable units
- 1 year parts and labor warranty
- Available in Gas or Electric
- Available in stainless or paint grip body



OPTIONS

STANDARD

- Electric units contain sealed wells with drains manifolded to one valve
- Gas units contain adjustable gas valve and pressure regulator

Ideal for...

Operators in demanding, fast-paced high volume back of the house applications



Stationary Electric
(Stainless)
E-2-CBSS - E-6-CBSS

Stationary Electric
(Paint Grip)
E-2-CBPG - E-6-CBPG

Stationary Gas
(Stainless)
G-2-CBSS - G-6-CBSS

Stationary Gas
(Paint Grip)
G-2-CBPG - G-6-CBPG

OPTIONS (cont'd)

DELUXE

- Electric units contain sealed wells with drains manifolded to one valve
- Gas units contain adjustable gas valve and pressure regulator
- Extended top with integral work surface
- Dish shelf included

Ideal for...

Operators in extensive plate-up or make-to-order serving applications



Stationary Electric
(Stainless)
E-2-DLSS - E-6-DLSS

Stationary Electric
(Paint Grip)
E-2-DLPG - E-6-DLPG

Stationary Gas
(Stainless)
G-2-DLSS - G-6-DLSS

Stationary Gas
(Paint Grip)
G-2-DLPG - G-6-DLPG

PORTABLE

- 6' cord and plug attached
- Polyvinyl bumper encircles base of unit
- Pusher bar and sliding doors standard

Ideal for...

Operators that require ultimate flexibility such as healthcare or dorm facilities offering in-room dining



Portable on Casters
(Stainless)
EP-3-CBSS - E-6-CBSS

Portable on Casters
(Paint Grip)
EP-3-CBPG - EP-6-CBPG

Thurmaduke™ Gas—Standard



| Model | Finish* | Wells | Gas/Electric | Specifications | | | | | | | | |
|--------|---------|-------|--------------|----------------|-------|-------|------|--------|------|-----------------|--------|-------|
| | | | | Length | | Width | | Height | | Cube Crated Ft. | Weight | |
| | | | | in | cm | in | cm | in | cm | | lbs | kg |
| G-2-CB | PG/SS | 2 | Gas | 32 | 81.3 | 25½ | 64.8 | 36 | 91.4 | 27.0 | 210 | 95.5 |
| G-3-CB | PG/SS | 3 | Gas | 46 | 116.8 | 25½ | 64.8 | 36 | 91.4 | 38.1 | 264 | 120.0 |
| G-4-CB | PG/SS | 4 | Gas | 60 | 152.4 | 25½ | 64.8 | 36 | 91.4 | 49.2 | 344 | 156.4 |
| G-5-CB | PG/SS | 5 | Gas | 74 | 188.0 | 25½ | 64.8 | 36 | 91.4 | 60.2 | 435 | 196.8 |
| G-6-CB | PG/SS | 6 | Gas | 88 | 223.5 | 25½ | 64.8 | 36 | 91.4 | 71.3 | 527 | 239.5 |

NOTE: Specify natural gas or propane gas when ordering. For high altitude orifice, specify elevation. Sliding doors NOT available, casters not available.
 *PG = Paint Grip, SS = Stainless Steel

Thurmaduke™ Gas—Deluxe



| Model | Finish* | Wells | Gas/Electric | Specifications | | | | | | | | | |
|--------|---------|-------|--------------|----------------|-------|-------|------|--------|------|-----------------|--------|-------|--------|
| | | | | Length | | Width | | Height | | Cube Crated Ft. | Weight | | BTU's |
| | | | | in | cm | in | cm | in | cm | | lbs | kg | |
| G-2-DL | PG/SS | 2 | Gas | 32 | 81.3 | 34 | 86.4 | 36 | 91.4 | 36.8 | 255 | 115.9 | 7,000 |
| G-3-DL | PG/SS | 3 | Gas | 46 | 116.8 | 34 | 86.4 | 36 | 91.4 | 50.3 | 335 | 152.3 | 7,500 |
| G-4-DL | PG/SS | 4 | Gas | 60 | 152.4 | 34 | 86.4 | 36 | 91.4 | 63.9 | 410 | 186.4 | 14,000 |
| G-5-DL | PG/SS | 5 | Gas | 74 | 188.0 | 34 | 86.4 | 36 | 91.4 | 77.4 | 495 | 225.0 | 17,500 |
| G-6-DL | PG/SS | 6 | Gas | 88 | 223.5 | 34 | 86.4 | 36 | 91.4 | 91.0 | 595 | 270.5 | 21,000 |

NOTE: Specify natural gas or propane gas when ordering. For high altitude orifice, specify elevation. Sliding doors NOT available, casters not available.
 *PG = Paint Grip, SS = Stainless Steel

Thurmaduke™ Electric—Standard



| Model | Finish* | Wells | Sealed/ Exposed | Specifications | | | | | | | | | | Voltage | Amps | Nema |
|--------|---------|-------|--------------------|----------------|-------|-------|------|--------|------|-----------------------|--------|-------|-----|---------|-------|------|
| | | | | Length | | Width | | Height | | Cube Crated Ft. | Weight | | | | | |
| | | | | in | cm | in | cm | in | cm | | lbs | kg | | | | |
| E-2-CB | PG/SS | 2 | Sealed | 32 | 81.3 | 25 ½ | 64.8 | 36 | 91.4 | 28.1 | 210 | 95.5 | 120 | 12.5 | 5-15 | |
| | | | | | | | | | | | | | 208 | 7.2 | 6-20 | |
| | | | | | | | | | | | | | 240 | 6.3 | 6-20 | |
| E-3-CB | PG/SS | 3 | Sealed | 46 | 116.8 | 25 ½ | 64.8 | 36 | 91.4 | 39.6 | 264 | 120.0 | 120 | 18.8 | L5-30 | |
| | | | | | | | | | | | | | 208 | 10.8 | 6-20 | |
| | | | | | | | | | | | | | 240 | 9.4 | 6-20 | |
| E-4-CB | PG/SS | 4 | Sealed | 60 | 152.4 | 25 ½ | 64.8 | 36 | 91.4 | 51.2 | 344 | 156.4 | 120 | 25.0 | 5-50 | |
| | | | | | | | | | | | | | 208 | 14.4 | 6-20 | |
| | | | | | | | | | | | | | 240 | 12.5 | 6-20 | |
| E-5-CB | PG/SS | 5 | Sealed | 74 | 188.0 | 25 ½ | 64.8 | 36 | 91.4 | 62.3 | 433 | 196.8 | 120 | 31.3 | 5-50 | |
| | | | | | | | | | | | | | 208 | 18.0 | L6-30 | |
| | | | | | | | | | | | | | 240 | 15.9 | 6-20 | |
| E-6-CB | PG/SS | 6 | Sealed | 88 | 223.5 | 25 ½ | 64.8 | 36 | 91.4 | 74.3 | 527 | 239.6 | 120 | NA | NA | |
| | | | | | | | | | | | | | 208 | 21.6 | L6-30 | |
| | | | | | | | | | | | | | 240 | 18.8 | L6-30 | |

NOTE: Cord and NEMA plug NOT included
 *PG = Paint Grip, SS = Stainless Steel

Thurmaduke™ Electric—Deluxe



| Model | Finish* | Wells | Sealed/ Exposed | Specifications | | | | | | | | | | Voltage | Amps | Nema |
|--------|---------|-------|--------------------|----------------|-------|-------|------|--------|------|-----------------------|--------|-------|-----|---------|-------|------|
| | | | | Length | | Width | | Height | | Cube Crated Ft. | Weight | | | | | |
| | | | | in | cm | in | cm | in | cm | | lbs | kg | | | | |
| E-2-DL | PG/SS | 2 | Sealed | 32 | 81.3 | 34 | 86.4 | 36 | 91.4 | 27.0 | 255 | 115.9 | 120 | 12.5 | 5-15 | |
| | | | | | | | | | | | | | 208 | 7.2 | 6-20 | |
| | | | | | | | | | | | | | 204 | 6.4 | 6-20 | |
| E-3-DL | PG/SS | 3 | Sealed | 46 | 116.8 | 34 | 86.4 | 36 | 91.4 | 38.1 | 335 | 152.3 | 120 | 18.8 | L5-30 | |
| | | | | | | | | | | | | | 208 | 10.8 | 6-20 | |
| | | | | | | | | | | | | | 240 | 9.4 | 6-20 | |
| E-4-DL | PG/SS | 4 | Sealed | 60 | 152.4 | 34 | 86.4 | 36 | 91.4 | 49.2 | 410 | 186.4 | 120 | 25.0 | 5-50 | |
| | | | | | | | | | | | | | 208 | 14.4 | 6-20 | |
| | | | | | | | | | | | | | 240 | 12.5 | 6-20 | |
| E-5-DL | PG/SS | 5 | Sealed | 74 | 188.0 | 34 | 86.4 | 36 | 91.4 | 60.2 | 495 | 225.0 | 120 | 31.3 | 5-50 | |
| | | | | | | | | | | | | | 208 | 18.0 | L6-30 | |
| | | | | | | | | | | | | | 240 | 15.9 | 6-20 | |
| E-6-DL | PG/SS | 6 | Sealed | 88 | 223.5 | 34 | 86.4 | 36 | 91.4 | 71.3 | 595 | 270.5 | 120 | NA | NA | |
| | | | | | | | | | | | | | 208 | 21.6 | L6-30 | |
| | | | | | | | | | | | | | 240 | 18.8 | L6-30 | |

NOTE: Cord and NEMA plug NOT included
 *PG = Paint Grip, SS = Stainless Steel

Thurmaduke™ Electric—Portable



| Model | Finish* | Wells | Sealed/ Exposed | Specifications | | | | | | | | | | | |
|---------|---------|-------|--------------------|----------------|-------|-------|------|--------|------|--------------------|--------|-------|---------|------|-------|
| | | | | Length | | Width | | Height | | Cube Crated Ft. | Weight | | Voltage | Amps | Nema |
| | | | | in | cm | in | cm | in | cm | | lbs | kg | | | |
| EP-3-CB | PG/SS | 3 | Sealed | 46 | 116.8 | 35 ½ | 90.2 | 36 | 91.4 | 39.6 | 345 | 156.8 | 120 | 18.8 | L5-30 |
| | | | | | | | | | | | | | 208 | 10.8 | 6-20 |
| | | | | | | | | | | | | | 240 | 9.4 | 6-20 |
| EP-4-CB | PG/SS | 4 | Sealed | 60 | 152.4 | 35 ½ | 90.2 | 36 | 91.4 | 51.2 | 420 | 190.9 | 120 | 25.0 | 5-50 |
| | | | | | | | | | | | | | 208 | 14.4 | 6-20 |
| | | | | | | | | | | | | | 240 | 12.5 | 6-20 |
| EP-5-CB | PG/SS | 5 | Sealed | 74 | 188.0 | 35 ½ | 90.2 | 36 | 91.4 | 62.3 | 505 | 229.6 | 120 | 31.3 | 5-50 |
| | | | | | | | | | | | | | 208 | 18.0 | L6-30 |
| | | | | | | | | | | | | | 240 | 15.9 | 6-20 |
| EP-6-CB | PG/SS | 6 | Sealed | 88 | 223.5 | 35 ½ | 90.2 | 36 | 91.4 | 74.3 | 605 | 275.0 | 120 | NA | NA |
| | | | | | | | | | | | | | 208 | 21.6 | L6-30 |
| | | | | | | | | | | | | | 240 | 18.8 | L6-30 |

NOTE: Cord and NEMA plug NOT included
 *PG = Paint Grip, SS = Stainless Steel

Aerohot™ and Thurmaduke™ Accessories

SHELVES

Glass Display Shelf



Carving Board/ Tray Shelf



Dish Shelf



Serving Shelves



Serving Shelf with Acrylic



Serving Shelf with Glass



Serving Shelf without Glass



Buffet Shelf 637



Buffet Shelves without lights



Buffet Shelves with lights



SLIDES AND COVERS

Tubular Tray Slide



Solid Tray Slide



Telescope Cover

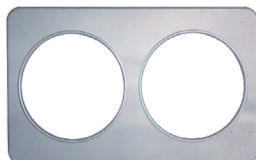


Round Telescope Cover

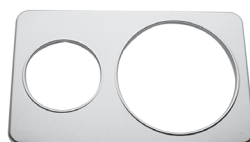


PLATES

Adapter Plate



Adapter Plate



Adapter Plate



MISC.

Carving Board



Casters*



*electric units only

Spillage/Water Pan



Thurmaduke™ Exclusive Accessories

FOODSHIELDS

TS530 Foodshield



TS540 Foodshield



TS550 Foodshield



TS560 Foodshield



TS570 Foodshield



TS580 Foodshield

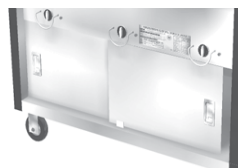


MISC.

Heated Base



Sliding Doors





Your Solutions Partner

www.dukemfg.com

**DUKE CORPORATE
UNITED STATES, CANADA**

2305 N. Broadway
St. Louis, MO 63102

TOLL FREE: 800.735.3853
PHONE: 314.231.1130

customercare@dukemfg.com

CounterCraft Office

7007 Stearns Street
Houston, Texas 77021

PHONE: 713.747.3611

countercraftinc.com

**EUROPE, MIDDLE EAST,
AFRICA, RUSSIA**

Duke Manufacturing C.R. s.r.o
Logistický areál D 11, Hala DC06
Nehvizdy 1100
PSČ 250 81
Czech Republic

PHONE: (+420) 323.608.193

sales.emea@dukemfg.com

ASIA

No. 3 Building,
Lane 28, Yu Lv Road,
Malu Town, Jiading District
Shanghai 201801, China

PHONE:
+86.21.59153525/59153526

service.asiapac@dukemfg.com