

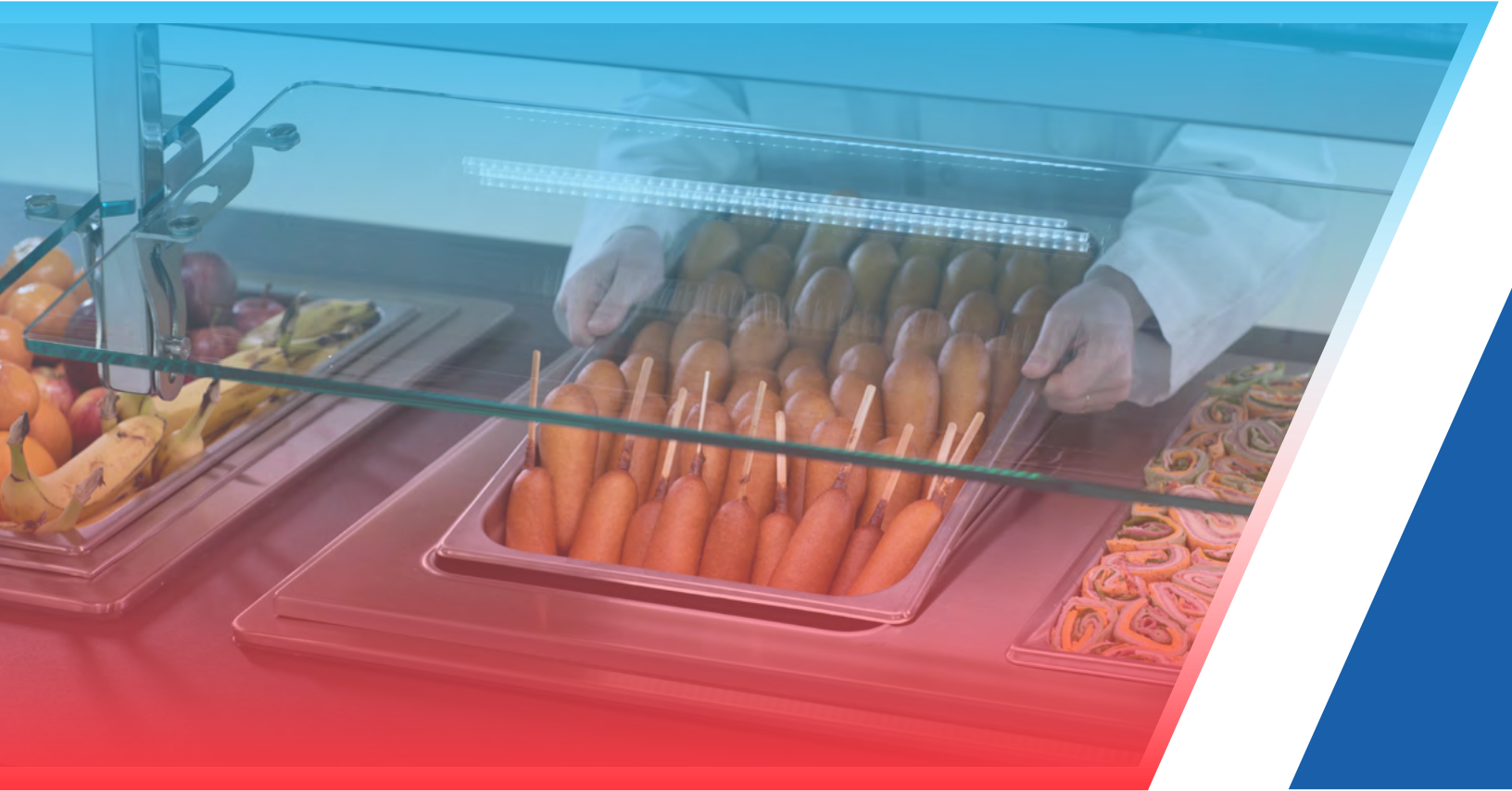


Your Solutions Partner

# Duke's Family of **Hot Cold** **Switchable Merchandisers**



# Family of **Switchable**

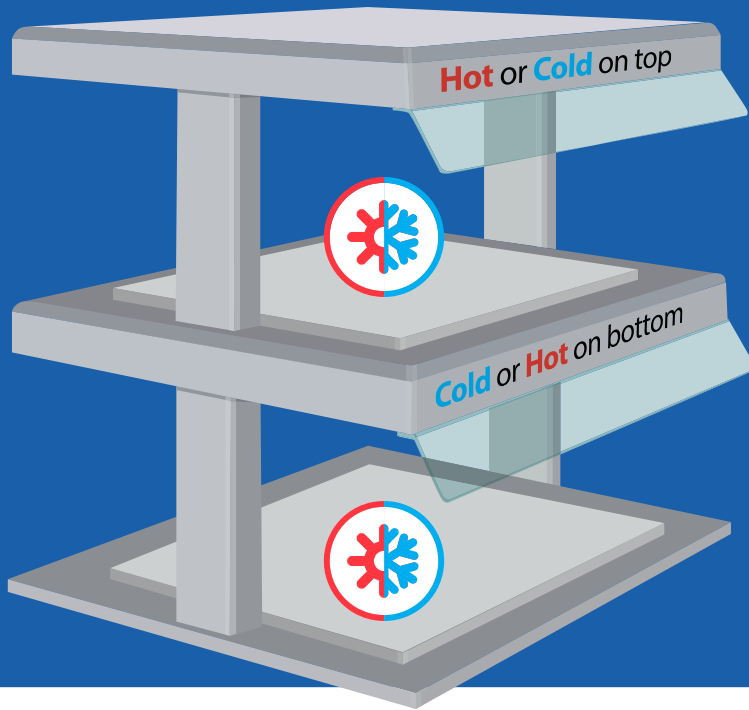


Merchandise hot food next to cold food



# Hot & Cold Merchandisers

Adding switchable technology to your lineup will...



## ...improve through put

Let your menu, not your equipment, to dictate the order of hot or cold and eliminate customers going from one line to another.

## ...save space

Maximize menu versatility in an area where space is limited.

## ...save on labor

Take food out of hot or cold holding and place directly on HotFrost™ Shelf.

## ...make everything easier

The controls are intuitive.



NEW!

MODEL

# Duke HotColdFreeze™

(Available in AeroServ™, Thurmaduke®, Counter Craft, and custom counters)



Duke HotColdFreeze™ provides versatility and flexibility for your operation by allowing you to operate any well in hot, cold, or freeze modes. **Mix and match modes in any combination for ultimate menu flexibility.**



**OPTIONS** | 1, 2, 3, 4, or 5 Wells


**BODY** | Stainless steel construction • Top mount with flush mount pans • Sealing gasket • **Drains optional\***  
• Standard 12" x 20" steamtable pans; 2 ½", 4" and 6" deep

**CONTROLS** | Intuitive, easy-to-use touch screen control changes mode of operation • 3 wet heat, 3 dry heat, 3 refrigerated and 1 freeze mode • 1 control per food well • Built-in Bluetooth capability & WiFi for connecting remotely

**REFRIGERATION** | 5 Year compressor replacement • R448a Refrigerant  
• Compressor slides out for easy service

**SERVICEABILITY** | Unit can be serviced in counter, no need to remove

**CERTIFICATIONS** |  

 **\*No drain, dry heat only option available!**

For specifications, **SCAN below**



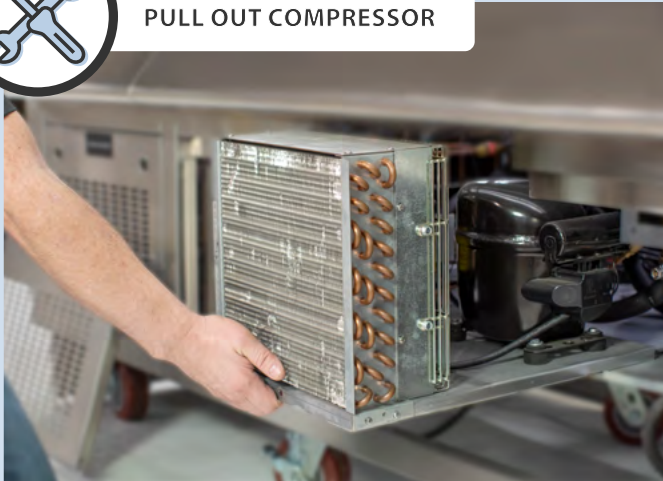


## IDEAL FOR

*offering a large variety menu* to appeal to more students and cutting down on waste due to food being held at the proper temperature even while holding hot food side-by-side with cold food



PULL OUT COMPRESSOR



TOUCH SCREEN CONTROLS  
AND BUILT IN WIFI MODEM



FLUSH MOUNT



MODEL

## HotFrost™ Glass Overshelf

(Available in Thurmaduke®, Counter Craft, and custom counters)

**OPTIONS** | Hot • Cold • Hot/Cold • Overshelf Heat Lamps • Basic Mechanical Control (Switch—Hot/Ambient/Cold)

**BODY** | Stainless steel • 1 ¼" Square Stainless Steel Tubing • Glass Shelf • Adjustable Breath Guard for Self/Full Service

**CONTROLS** | Intuitive Touchscreen with built-in connectivity

*Designed to blend in with our BG food shields.*



### IDEAL FOR

**use over serving equipment** such as food wells, recessed drop-ins and other setups; K-12 cafeterias



### Single Recessed HotFrost Top

Accommodates one  
(1) 18" x 26" sheet pans



### Double Recessed HotFrost Top

Accommodates two  
(2) 18" x 26" sheet pans

\* Overshelf Heat Lamp shown—not included  
Breath Guard Heat Lamps—not available

For specifications,  
**SCAN below**



*Custom built by CounterCraft, please consult factory*

\* These products may be covered by one or more patents. For further information see—[www.dukemfg.com/patents](http://www.dukemfg.com/patents)

MODEL

# HotFrost™ Dual Tier Merchandiser

(Available in Thurmaduke®, Counter Craft, and custom counters)

**OPTIONS** | Dual Sided • Basic Mechanical Control (Switch—Hot/Ambient/Cold)

**FEATURES** | Stainless Steel Body and Shelves • Dual Tier Doubles Merchandising Space • Switchable Warming/Cooling for Each Tier • Independent Shelf Contained Refrigeration • High Polished Edges • Lights • Heat Shields

**CONTROLS** | Intuitive Touchscreen with built-in connectivity

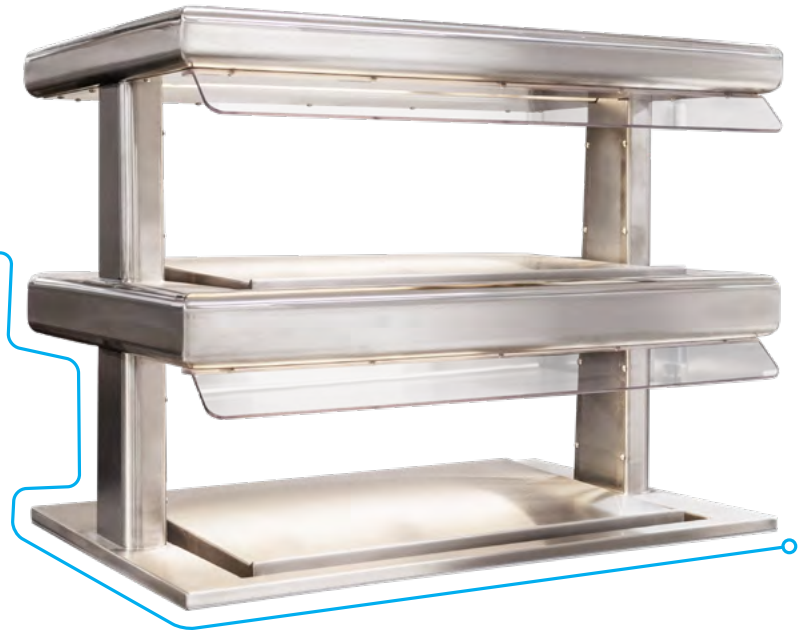
**CERTIFICATIONS** | 



## IDEAL FOR

*high-volume operations* that require frequent replenishment of product; K-12 cafeterias

For specifications,  
**SCAN below**





Shown with optional stone insert, available in 3 different colors for more retail upscale look

MODEL

## HotFrost™ Recessed Drop-In

(Available in Thurmaduke, Counter Craft or custom counters)

**OPTIONS** | Hot Only • Frost Only • Hot/Frost • Basic Mechanical Control • Stone Inserts (3 color options)  
| Drain Optional • Duplexed Evaporative System (for stacked overshef and drop-in)

**FEATURES** | Stainless Steel

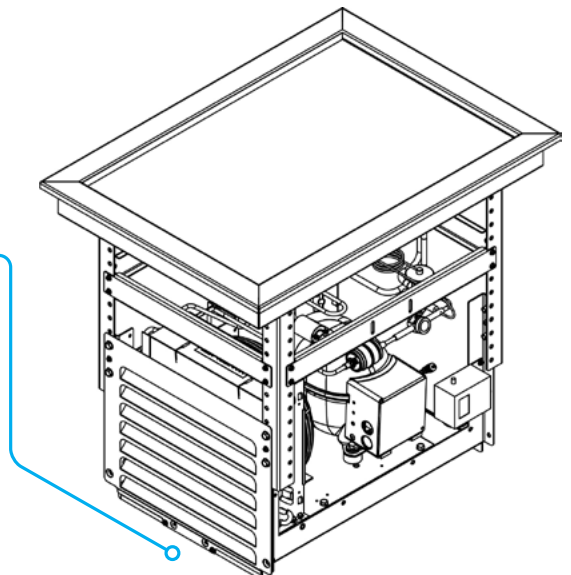
**CONTROLS** | Intuitive Touchscreen with built-in connectivity



### IDEAL FOR

**buffets or serving systems**, perfectly fits 18" x 26" sheet pans to make your operation versatile and flexible

For specifications,  
**SCAN below**





MODEL

# HotFrost™ Stone

(Flush mount, only available in Counter Craft or custom counters)

**OPTIONS** | Hot Only • Frost Only • Hot/Frost • Basic Mechanical Control

**FEATURES** | 1.2cm Dekton

**CONTROLS** | Intuitive Touchscreen with built-in connectivity

Available only as a part of a Duke serving counter system, consult factory

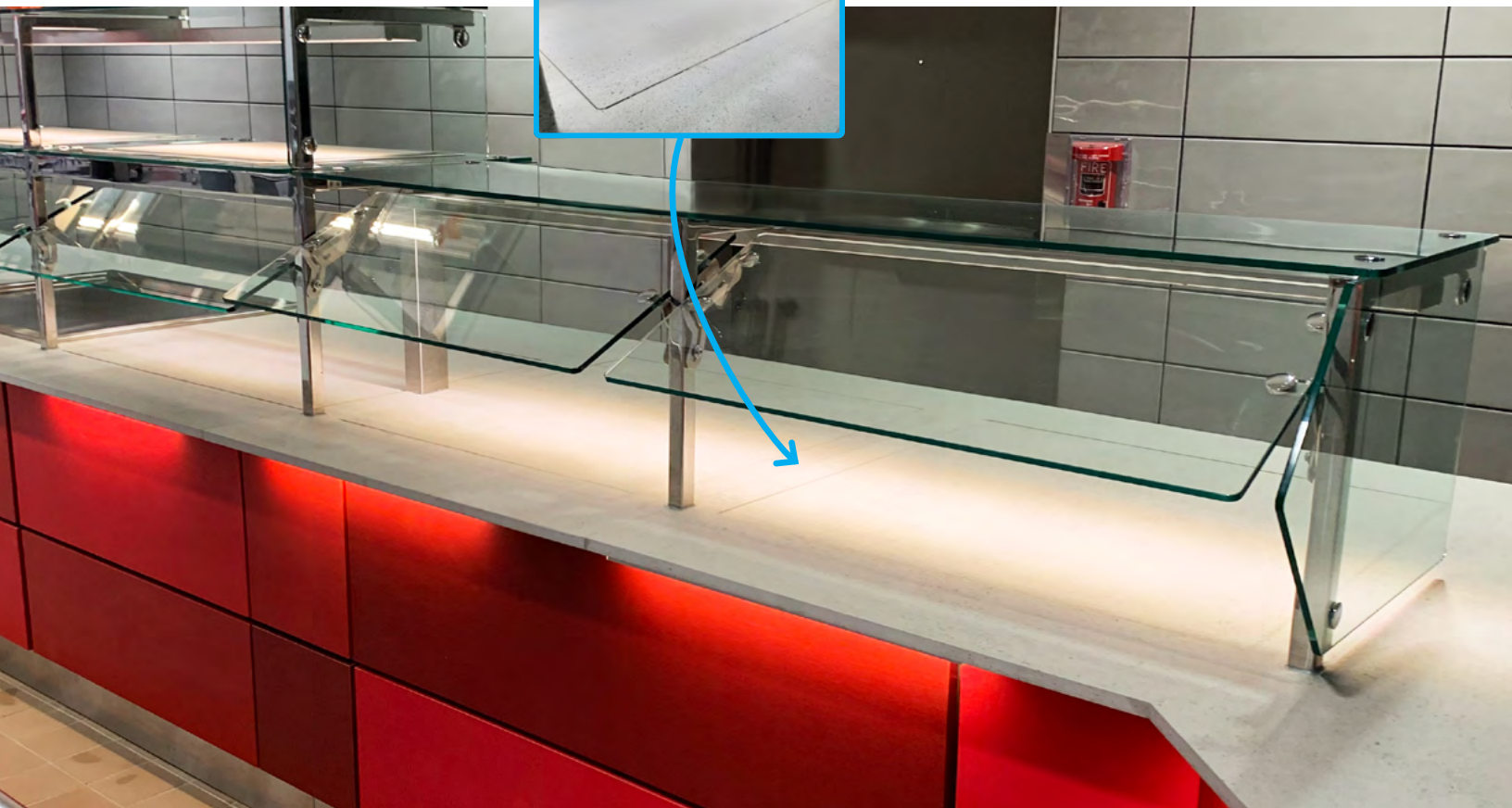


## IDEAL FOR

buffets or serving systems with **stone tops**, where a clean consistent look is desired; higher education and B&I operations



## SEAMLESS APPEARANCE



\* These products may be covered by one or more patents. For further information see—[www.dukemfg.com/patents](http://www.dukemfg.com/patents)

# Duke Serving Solutions

## AeroServ™

Our Most Economical  
Traditional Serving Systems



## Thurmaduke™

Affordable Sophistication

Designed for the Way Your Work





# Counter Craft

## Upscale

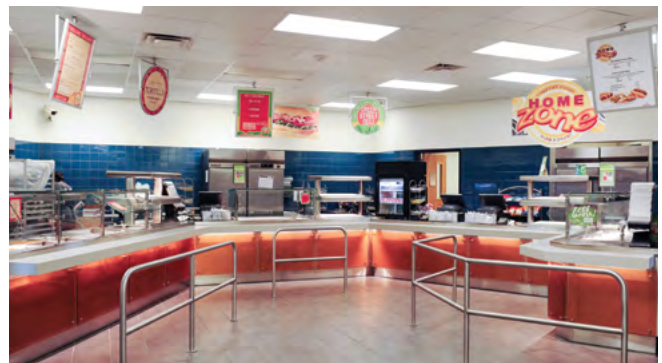
Food Court, Kiosk & Cafeteria Solutions



# Custom Counters

## The Unique Choice

A Solution Just for You



 WARNING for CA residents: go to [www.dukemfg.com/prop65](http://www.dukemfg.com/prop65) for Prop 65 warning



**Your Solutions Partner**

[www.dukemfg.com](http://www.dukemfg.com)



**Your Solutions Partner**

**DUKE CORPORATE  
UNITED STATES, CANADA**

2305 N. Broadway  
St. Louis, MO 63102

Toll Free: 800.735.3853  
Phone: 314.231.1130  
Fax: 314.231.5074

**COUNTERCRAFT**

7007 Stearns Street  
Houston, Texas 77021  
Phone: 832 319 7455  
[countercraftinc.com](http://countercraftinc.com)