

Project	Quantity	Item #
Model Specified:		CSI Section 11400

Compact Undercounter Freezer Models/Self-Contained

27" Wide Models



Model ULT27-R
(shown with optional casters)



Stainless Exterior

27" One Door Freezer Hinged Left
27" One Door Freezer Hinged Right

ULT27-L
ULT27-R

Traulsen's durable, high performance, compact undercounter freezer models provide a high quality/high value alternative to the all too common commodity types in today's market.

Durable, built with stainless steel exteriors and anodized aluminum interiors, their heavy duty cabinet construction promises years of useful service. Truly front breathing, their design allows for "zero-clearance" installation. As a result they can be placed right up against the back wall and alongside other kitchen equipment, saving valuable floor space.

Additionally, they offer a wide range of optional accessories to choose from, and are ideal for use with many different type applications.

Standard Product Features

- Stainless Steel Exterior Top, Sides & Doors
- Anodized Aluminum Interior
- Front Breathing Self-Contained Refrigeration System
- Environmentally Friendly R-404A Refrigerant
- Self-Closing Stainless Steel Doors With Stay Open Feature At 105 Degrees
- Anodized Aluminum Interior Door Liner
- Interior Mounted Thermometer
- Two (2) Powder Coated Shelves Per Door, Mounted On Pilasters
- Automatic Non-Electric Condensate Evaporator
- Magnetic Snap-In Door Gaskets
- 8' Cord & Plug Attached
- Set of Four (4) 6" High Adjustable Legs
- One Year Parts And Labor Warranty
- Five Year Compressor Warranty

Optional Accessory Kits*

- **CASTER 5SET4** (four 6" high casters for 27" models)
- **CASTER SET4IN** (four 4" high casters for 27" models)
- **CASTER SET3IN** (four 3-1/2" high casters for 27" models)
- **CASTER SET2IN** (four 2-1/2" high casters for 27" models)
- **SHELF CPW1** (additional shelf for all 27" models)

*Optional accessory kits shipped separately for field installation.

Factory Installed Options

- Stainless Steel Finished Back
- **CU27TOP BSWO** (22 ga. stainless steel top with 4" backsplash for models ULT27)
- Other Door Hingings

Other Options

- Two Year Service/Labor Warranty Available



Listed by Underwriters Laboratories Inc., to U.S. and Canadian safety standards and NSF International in accordance with ANSI/NSF7.

Approval: _____



TRAUlsen
4401 BLUE MOUND RD.
PHONE 1 (800) 825-8220
Website: www.traulsen.com

FT. WORTH, TX 76106
FAX-MKTG. 1 (817) 624-4302

Project	Quantity	Item #
Model Specified:		CSI Section 11400

Specifications

Construction, Hardware and Insulation

Cabinet exterior front, one piece sides, and doors are constructed of 22 gauge stainless steel. Cabinet interior and door liners are constructed of anodized aluminum. The exterior cabinet back and bottom are constructed of galvanized steel.

Door self close at less than 90 degrees and also include a stay open feature at 105 degrees. Easily removable for cleaning, vinyl magnetic door gasket assures tight door seal.

Both the cabinet and door(s) are insulated with an average of 2" thick high density, non-CFC, foamed in place polyurethane.

Refrigeration System

A balanced, rear mounted, front breathing, self-contained refrigeration system using R-404A refrigerant is provided. It features a TXV valve, air-cooled hermetic compressor, a forced air evaporator coil and a non-electric condensate evaporator. An 8' cord and plug is provided. Standard operating temperature for freezer models is 0 to -5°F.

Interior

Standard interior arrangements include two (2) powder coated wire shelves per door, mounted on pilasters. These are adjustable in 1/2" increments, allowing for a minimum of 1-1/2" spacing between shelves.

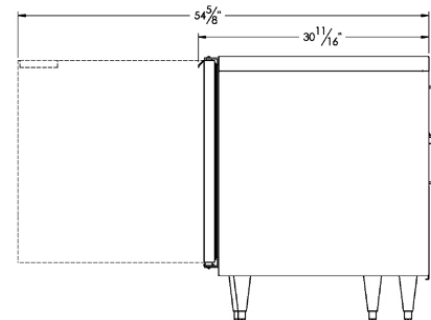
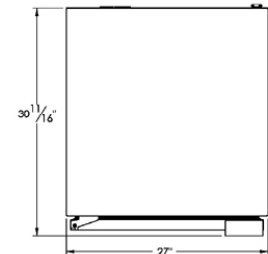
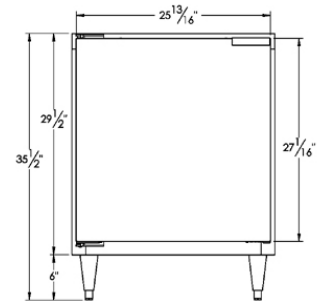
Warranties

Both a one year parts and labor warranty and a five year compressor warranty (self-contained models only) are provided standard. An optional 2nd year extended parts and labor warranty is also available.

DIMENSIONAL DATA	ULT27
Freezer	
Net capacity cu. ft.	7.1
Length - overall in.	27
Depth - overall in.	30 ¹¹ / ₁₆
Depth - with door open 90°	54 ⁵ / ₁₆
Clear door height in.	24 ¹ / ₈
Clear door width in.	22 ³ / ₄
Height - overall on 6" legs in.	35 ¹ / ₂
Number of shelves - total	2
Shelf area sq. ft.	4.88
ELECTRICAL DATA	
Voltage	115/60/1
Full Load Amperes	8.0
REFRIGERATION DATA	
Refrigerant	R-404A
BTU/HR - H.P. ¹	1930 (1/2 HP)
SHIPPING DATA	
Length - Crated in.	44
Depth - Crated in.	44 ¹ / ₄
Height - Crated in.	46 ³ / ₄
Volume - Crated cu. ft.	53
Net Wt. lbs.	260
Gross Wt. lbs.	285

NOTES

1= Based on a 90 degree F ambient and 20 degree F evaporator.



Equipped With One NEMA 5-15 P Plug

NOTE: When ordering please specify: Voltage, Hinging, Optional Accessories and any additional warranties.

Continued product development may necessitate specification changes without notice.

Part No. TR35925 (revised 8/11)

TRAULSEN
4401 BLUE MOUND RD.
PHONE 1 (800) 825-8220
Website: www.traulsen.com

FT. WORTH, TX 76106
FAX-MKTG. 1 (817) 624-4302

Traulsen