

MODEL # SCXD

SCXD - Shown with brass trim.

SPECIFICATIONS

The SCXD is a refrigerated deli display case with a choice of standard grade plastic laminate exterior ends and lift-up curved tempered front glass for easy cleaning and stocking.

Available depths: 37 1/2"Available lengths: 45 7/8" 57 7/8" 69 7/8" 77 5/8" 90 1/4"

NOTE: Cannot fit through a 36" opening.

STANDARD FEATURES

- Self-Contained Refrigeration
- Stainless Steel Noser Panel
- Stainless Steel Back
- Standard Grade Laminate Exterior
- Top Canopy Light
- 2 Stainless Steel Shelves with Lights
- Stainless Steel Deck Pan
- Black Base
- Thermometer
- Built-In Condensate Evaporator
- Cord and Plug
- 115V/60/Single Phase
- UL Listed in Accordance with NSF 7
- 134A Refrigerant

OPTIONAL FEATURES

- Stainless Steel Exterior Finish
- Special Laminates
- Wood Veneers (Unfinished)
- Wood Veneers (Stained & Sealed)
- Miscellaneous Trim
- Mirrored Interior Ends
- Mirrored Rear Sliding Doors
- Front Glass Locks
- Rear Door Locks
- Promolux Lighting (Low UV)
- Brass Trim and Hardware
- Wire Shelves
 - Brass White Black Chrome
- Glass Shelves with Lights
- Casters
- Bullet Feet
- Glass Vision End Panel
- 5 Year Compressor Warranty
- Remote Refrigeration

WHEN ORDERING, PLEASE SPECIFY:

APPLICATION: _____

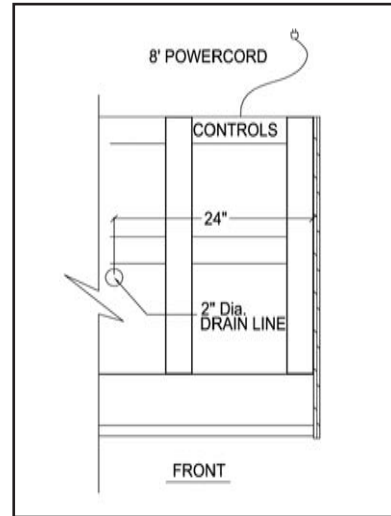
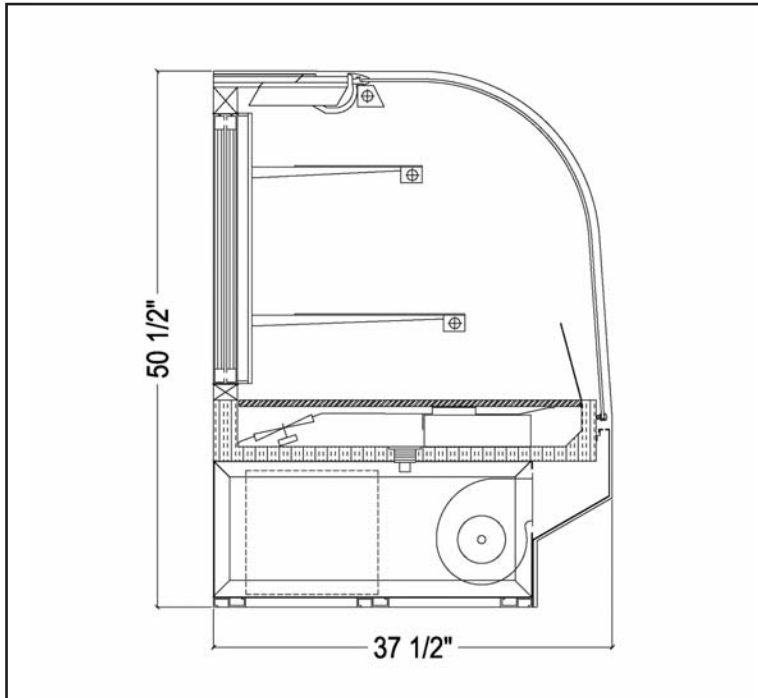
REFRIGERATION TYPE: _____

LAMINATE COLOR: _____

EXPRESS DELI

TOLL FREE: 800-525-3692

MODEL # SCXD



Electrical & Plumbing locations



Refrigerated Case Display 67C9 Listed
Also classified by Underwriters Laboratories Inc.
In Accordance with ANSI/NSF 7-1999 and ANSI/NSF 2-1999

MODEL	L	D	H	COMP HP	VOLT	AMP	NEMA PLUG	WT
SCXD48R	45 7/8	37 1/2	50 1/2	1/3	115V	11.3	5-15P	640
SCXD60R	57 7/8	37 1/2	50 1/2	1/3	115V	11.3	5-15P	740
SCXD72R	69 7/8	37 1/2	50 1/2	1/2	115V	14.6	5-15P	850
SCXD77R	77 5/8	37 1/2	50 1/2	1/2	115V	14.6	5-20P	900
SCXD96R	90 1/4	37 1/2	50 1/2	1/2	115V	15.1	5-20P	1175

The SCXD merchandiser is designed for use in stores where temperature and humidity do not exceed 75 Degrees F and 55% R.H. Locate away from direct sunlight, rapid air currents and extreme temperature changes. Exposure to air currents from ceiling fans, air conditioners, ovens, etc. will disrupt the case's air curtain and refrigerated zone within. Any adverse conditions will affect warranty.

RPI in line with its policy to continually improve its product reserves the right to change materials and specifications without notice.

CALL TOLL FREE: 800-525-3692 (609-714-2330)

FAX: 609-714-2331 www.regalpinnacle.com

220 ROUTE 70, MEDFORD, NJ 08055

RPI REGAL
PINNACLE
INTEGRATIONS INDUSTRIES, INC.