

# EXPRESS BAKERY

ITEM: \_\_\_\_\_ QUANTITY: \_\_\_\_\_

## LIFT GLASS HALF /HALF MODEL # SCXBRC

SCXBRC - Shown with optional front laminated bumper and white base.

### SPECIFICATIONS

The SCXBRC is a metal framed half refrigerated and half non-refrigerated bakery display case with a choice of standard grade plastic laminate exterior ends and lift-up tempered curved front glass for easy cleaning and stocking.



Half Refrigerated Self-Contained Half Non-Refrigerated

Available depths:  37 1/2"

Available lengths:  45 7/8"  57 7/8"  69 7/8"

77 5/8"  90 1/4"

NOTE: Cannot fit through a 36" opening.

### STANDARD FEATURES

- Self-Contained Refrigeration
- Metal Framed
- Stainless Steel Noser Panel
- Stainless Steel Back
- Standard Grade Laminate Exterior
- Top Canopy Light
- 3 Tempered Glass Shelves with Lights
- Stainless Steel Deck Pans
- Black Base
- Thermometer
- Built-In Condensate Evaporator
- Cord & Plug
- 115V/60/Single Phase
- UL Listed in Accordance with NSF 7
- 134A Refrigerant

### OPTIONAL FEATURES

- Stainless Steel Exterior Finish
- Special Laminates
- Wood Veneers (Unfinished)
- Wood Veneers (Stained & Sealed)
- Miscellaneous Trim
- Mirrored Interior Ends
- Mirrored Rear Sliding Doors
- Front Glass Locks
- Rear Door Locks
- Promolux Lighting (Low UV)
- Brass Trim and Hardware
- Wire Shelves
  - Brass  White  Black  Chrome
- Casters
- Bullet Feet
- 5 Year Compressor Warranty
- Remote Refrigeration

### WHEN ORDERING, PLEASE SPECIFY:

APPLICATION: \_\_\_\_\_

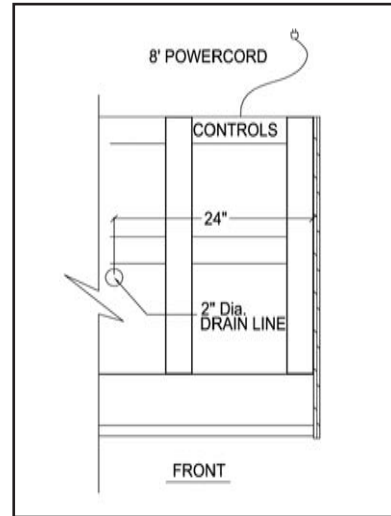
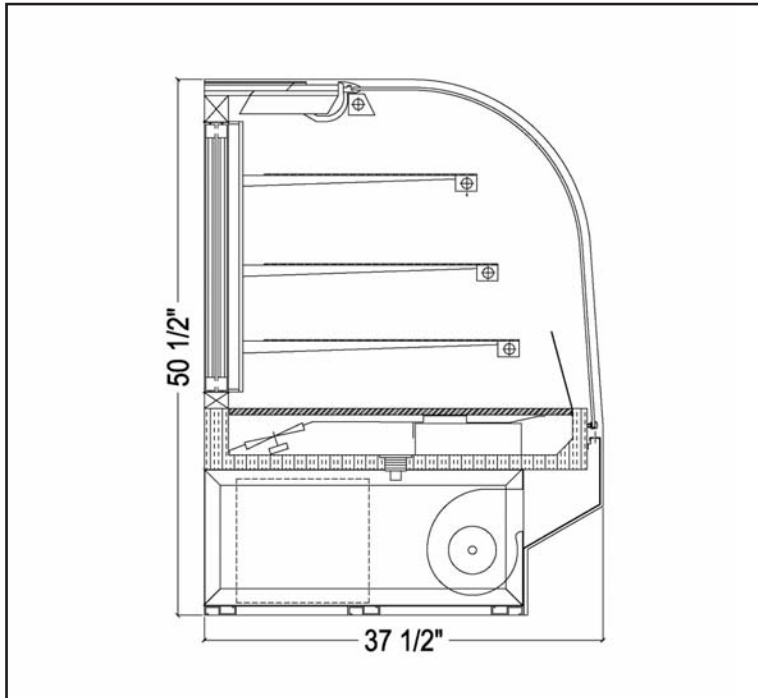
REFRIGERATION TYPE: \_\_\_\_\_

LAMINATE COLOR: \_\_\_\_\_

# EXPRESS BAKERY

TOLL FREE: 800-525-3692

## LIFT GLASS HALF /HALF MODEL # SCXBRC



### Electrical & Plumbing locations



Refrigerated Case Display 67C9 Listed  
Also classified by Underwriters Laboratories Inc.  
In Accordance with ANSI/NSF 7-1999 and ANSI/NSF 2-1999

MODEL	L	D	H	COMP HP	VOLT	AMP	NEMA PLUG	WT
SCXB48RC	45 7/8	37 1/2	50 1/2	1/4	115V	11.1	5-15P	655
SCXB60RC	57 7/8	37 1/2	50 1/2	1/4	115V	11.1	5-15P	800
SCXB72RC	69 7/8	37 1/2	50 1/2	1/3	115V	13.1	5-20P	900
SCXB77RC	77 5/8	37 1/2	50 1/2	1/3	115V	13.1	5-20P	1000
SCXB96RC	90 1/4	37 1/2	50 1/2	1/3	115V	13.1	5-20P	1300

The SCXBRC merchandiser is designed for use in stores where temperature and humidity do not exceed 75 degrees F and 55% R.H. Locate away from direct sunlight, rapid air currents and extreme temperature changes. Exposure to air currents from ceiling fans, air conditioners, ovens, etc. will disrupt the case's air curtain and refrigeration zone within. Any adverse conditions will affect warranty.

RPI in line with its policy to continually improve its product reserves the right to change materials and specifications without notice.

CALL TOLL FREE: 800-525-3692 (609-714-2330)

FAX: 609-714-2331 [www.regalpinnacl.com](http://www.regalpinnacl.com)

220 ROUTE 70, MEDFORD, NJ 08055

**RPI** REGAL  
PINNACLE  
INTEGRATIONS INDUSTRIES, INC.