

## FDSS Floor Drain Sump Sink Standard Design

### SPECIFICATION:

**FDSS Model** Floor Drain Sump Sinks are 16-gauge type 304 stainless steel, with brushed satin finish. All corners are fully welded, ground and polished smooth.

The unit is 12" x 12" square, 4" deep, equipped with an appropriate grating. Recessed flange and 1" deep ledge hold the grating in position.

Sides are coved and the bottom is creased to a 4" OD waste outlet with the fitted perforated basket drain.

### PRODUCT GUIDE:

Use in all types of facilities as an Indirect Waste or Sump Sink/Floor Drain.

NSF feature makes this product unique.

Recessed flange supports floor tile and provides a grout pocket.

Setting frame for waterproof membrane and/or integral seepage flange with "weep" holes can be added for wet floor areas.

### OPTIONS:

- 14-gauge stainless steel
- 10" x 10" size available
- Scrap collection tray available
- Use with any style IMC trough grating
- Security/Correctional Design
- Special sizes and design
- Standard and stock units available for immediate shipment
- Seepage flange and "weep" holes
- See Price Book for other options



\*Price page 49

Specifications subject to change without notice.



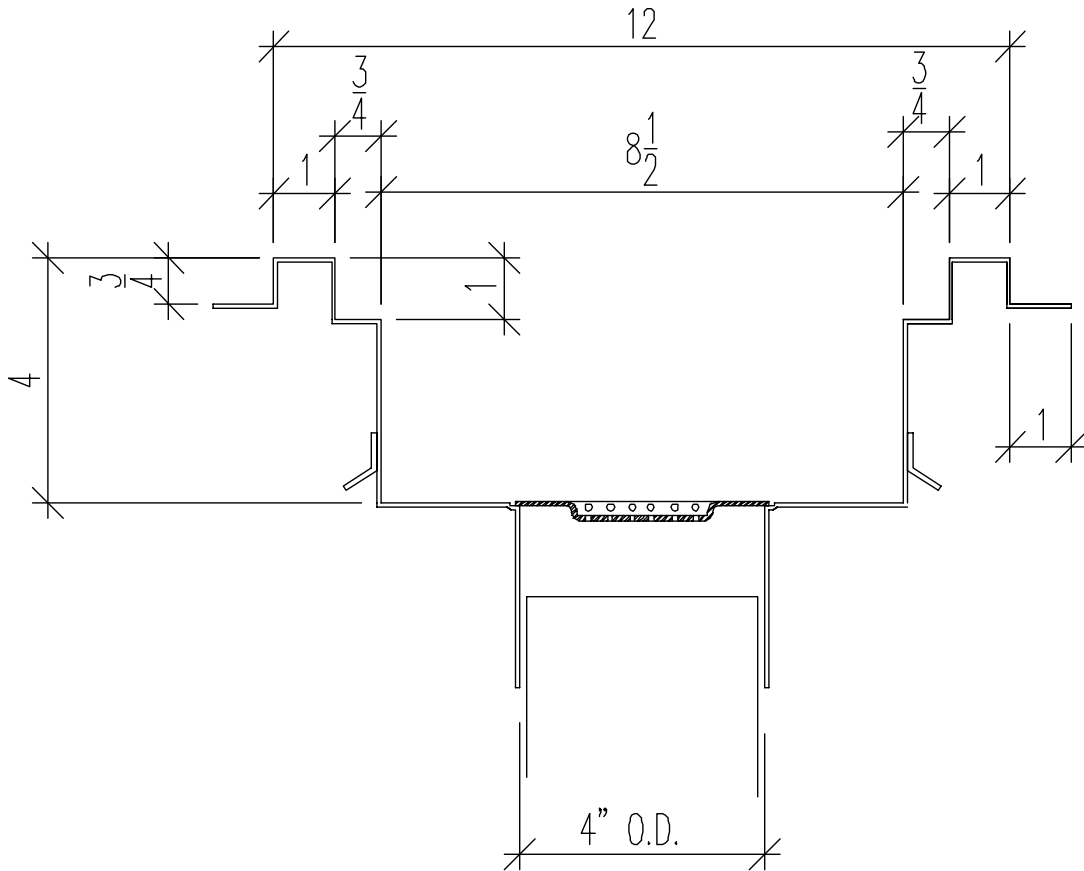
P.O. Box 206  
Copiague, NY 11726-0206

800-221-5644/631-789-8881  
Fax: 631-789-3633

[www.imcteddy.com](http://www.imcteddy.com)

FDSS-30 1007

# FDSS Floor Drain Sump Sink Standard Design



## FLOOR DRAIN SUMP SINK, STANDARD DESIGN - 4" Deep

MODEL	SIZE (W x L)	METRIC	WEIGHT
FDSS-1212	12" X 12"	305 X 305	10
FDSS-1010	10" X 10"	254 X 254	8

\*See Price book page 58-59 for options.

Specifications subject to change without notice.



**IMC/TEDDY**  
FOOD SERVICE EQUIPMENT

P.O. Box 206  
Copiague, NY 11726-0206

800-221-5644/631-789-8881  
Fax: 631-789-3633

FDSS-30 1007

[www.imcteddy.com](http://www.imcteddy.com)