

## CFT Floor Troughs Standard Design

### SPECIFICATION:

**CFT Model** Floor Troughs are 14-gauge type 304 stainless steel one-piece construction. Horizontal corners are coved and the trough is integrally pitched toward a waste outlet with a stainless steel beehive strainer and a 4" OD tailpiece.

Recessed flange and 1" deep ledge for IMC grating are integral with the unit. Troughs are 4" deep overall.

Joints are TIG welded and leak-proof. Exposed surfaces finished brush satin.

### PRODUCT GUIDE:

Use for Commercial and Institutional Buildings or large food prep facilities.

Flexible design such as custom depths and cross-section shape make this a versatile drain trough.

Recessed flange supports floor tile and provides a grout pocket.

Setting frame for waterproof membrane and/or integral seepage flange with "weep" holes can be added for wet floor areas.

Extension arms and intersections available for multiple equipment layout.

### OPTIONS:

- 12 gauge stainless steel
- Scrap collection tray
- Use with any style IMC trough grating
- Custom designs, sizes and waste location. Shallow 2" deep available
- Optional wastes and locations
- Laundry design with lint basket. (See Spec Sheet)
- Seepage flange and "weep" holes.
- See Price Book for other options.
- Standard and stock sizes fit most applications.
- Anti-Splash Design



\*Price page 33

Specifications subject to change without notice.



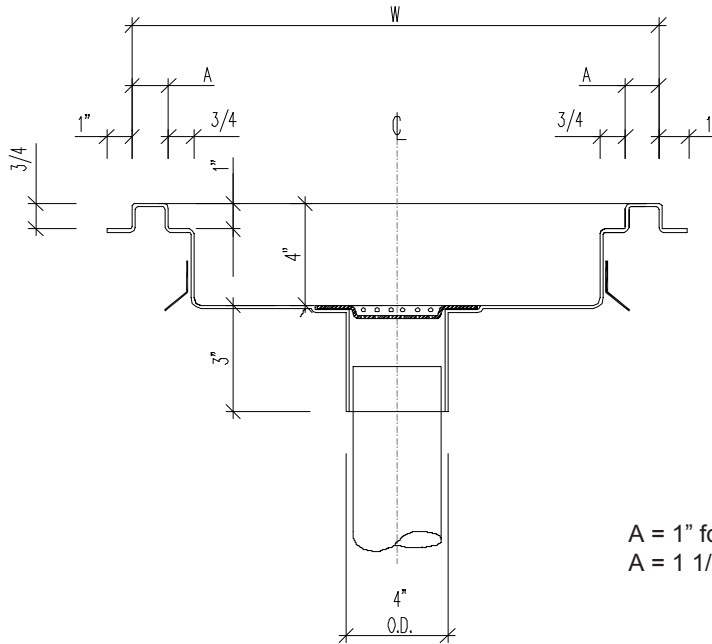
P.O. Box 206  
Copiague, NY 11726-0206

800-221-5644/631-789-8881  
Fax: 631-789-3633

CFT-30 1007

[www.imcteddy.com](http://www.imcteddy.com)

# CFT Floor Troughs Standard Design



## FLOOR TROUGH, CFT SERIES, STANDARD DESIGN - 4" Deep

MODEL	SIZE (W x L)	METRIC	WEIGHT	MODEL	SIZE (W x L)	METRIC	WEIGHT
CFT-1224	12" x 24"	305 x 610	16	CFT-2424	24" x 24"	610 x 610	28
CFT-1236	12" x 36"	305 x 914	24	CFT-2436	24" x 36"	610 x 914	42
CFT-1248	12" x 48"	305 x 1219	32	CFT-2448	24" x 48"	610 x 1219	56
CFT-1260	12" x 60"	305 x 1524	40	CFT-2460	24" x 60"	610 x 1524	70
CFT-1272	12" x 72"	305 x 1829	48	CFT-2472	24" x 72"	610 x 1829	84
CFT-1284	12" x 84"	305 x 2134	56	CFT-2484	24" x 84"	610 x 2134	98
CFT-1296	12" x 96"	305 x 2438	64	CFT-2496	24" x 96"	610 x 2438	112
CFT-12108	12" x 108"	305 x 2743	72	CFT-24108	24" x 108"	610 x 2743	126
CFT-12120	12" x 120"	305 x 3048	80	CFT-24120	24" x 120"	610 x 3048	140
CFT-1824	18" x 24"	458 x 610	20	CFT-3024	30" x 24"	762 x 610	42
CFT-1836	18" x 36"	458 x 914	30	CFT-3036	30" x 36"	762 x 914	63
CFT-1848	18" x 48"	458 x 1219	40	CFT-3048	30" x 48"	762 x 1219	84
CFT-1860	18" x 60"	458 x 1524	50	CFT-3060	30" x 60"	762 x 1524	105
CFT-1872	18" x 72"	458 x 1829	60	CFT-3072	30" x 72"	762 x 1829	126
CFT-1884	18" x 84"	458 x 2134	70	CFT-3084	30" x 84"	762 x 2134	147
CFT-1896	18" x 96"	458 x 2438	80	CFT-3096	30" x 96"	762 x 2438	168
CFT-18108	18" x 108"	458 x 2743	90	CFT-30108	30" x 108"	762 x 2743	189
CFT-18120	18" x 120"	458 x 3048	100	CFT-30120	30" x 120"	762 x 3048	210

Note - Standard troughs up to 96" have one (1) waste at center. Over 96", troughs have two (2) wastes equidistant.

\*See Price book pages 33, 37, 41, 45, 52, 54 & 56-59 for additional sizes and options.

Specifications subject to change without notice.



P.O. Box 206  
Copliague, NY 11726-0206

800-221-5644/631-789-8881  
Fax: 631-789-3633

www.imcteddy.com

CFT-30 1007