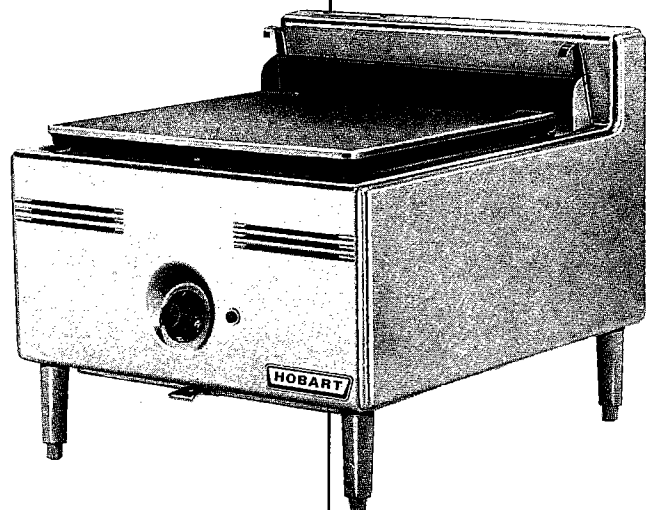


COMPACT PRODUCTION, UNIFORM PERIMETER HEATING

- **Easy to Clean** — Griddle cabinet constructed of grained, nickel-chrome plated, stain resistant steel.
- **3/8" Thick, polished cast iron griddle plate** — Fast response, accurate temperature control; easily cleaned.
- **Thermostatically controlled** — allows fast and accurate response to different load conditions.
- **Stainless steel heating elements with uniform heat pattern** — Eliminates hot and cold spots. Elements are pressure clamped to griddle surface providing maximum heat transfer to the surface and fast response to load conditions.
- **Heating element cycle light** — indicates if elements are heating or if griddle has reached preset temperature.
- **Removable rear grease chute; full-width grease container** — allows scraping at any point. Allows large grease storage capacity. Easy to remove.

Specifications, Details and Dimensions on Reverse Side.



HG2 ELECTRIC COUNTER GRIDDLE



SPECIFICATIONS Listed by Underwriters Laboratories Inc and by National Sanitation Foundation.

CONSTRUCTION: Cabinet is easy to clean nickel-chrome plated, cold rolled steel. Four-inch high plastic legs are standard. Grid surface is 3/8" thick polished cast iron. Rear grease chute and removable full width fat container.

CONTROLS: One thermostat controls entire grid. Temperature range is 200-450°F and preheats to 350°F in 7 minutes. A signal light indicates whether or not unit is operating and when preset temperature is reached. Power terminal box is at left rear.

CAPACITY: 220 sq. inches griddle surface and produces the following hourly quantities; 180 + 2-1/2 oz., 3-1/2" diameter hamburgers (12 per load); 96-120 4" pancakes (8 per load); and 60 + 4 oz. 1/2" thick minute steaks (5 per load).

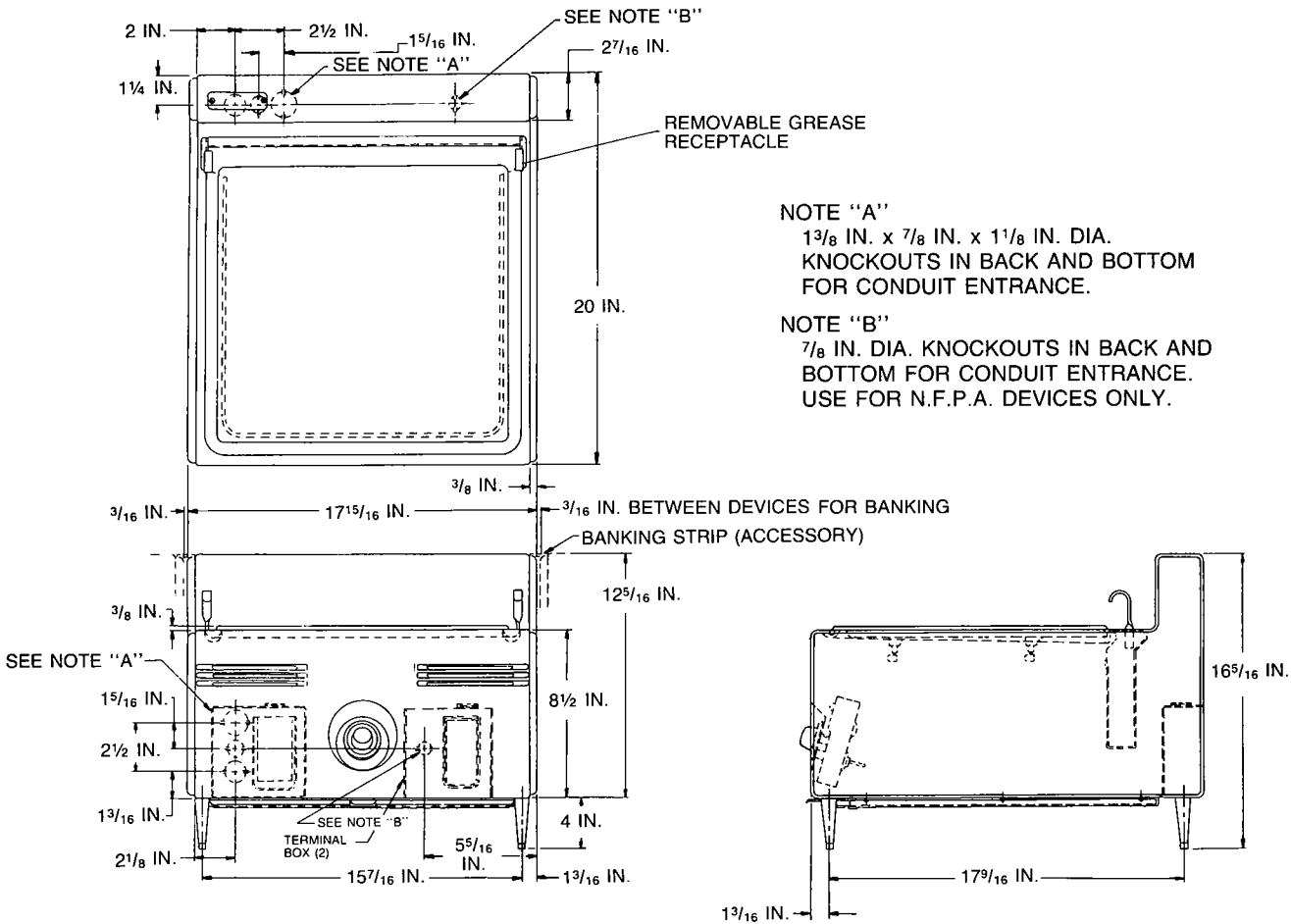
ELECTRICAL: 3 KW. Single phase AC power supply only. Unit has uniform pattern of enclosed tubular stainless steel heating units clamped to grid's bottom. Hot and cold spots are eliminated and the perimeter is heated.

ACCESSORIES: Banking strip; 20 amp, 250V, 3 foot cord and plug NEMA 6-20P; Set of four 4" high chrome plated legs with adjustable feet.

WEIGHT: Shipping 56 lbs. Net 48 lbs.

As continued product improvement is a policy of Hobart, specifications are subject to change without notice.

DETAILS AND DIMENSIONS



WORLD HEADQUARTERS
TROY, OHIO 45374