

HOBART701 S Ridge Avenue, Troy, OH 45374
1-888-4HOBART • www.hobartcorp.com**HX SERIES
FRYMATE™****HOBART****STANDARD FEATURES**

- Free standing or “Add On” in the field to the left or right of a freestanding fryer or battery of fryers
- Stainless steel front, top, sides and door
- Stainless steel sloped drain top with removable grease collector
- Set of four 6" adjustable casters (two locking, two non-locking) on HX15, HX21, HX21S and HX21MS
- Set of four 6" adjustable legs for HX15S only

ACCESSORIES

- Tank cover (works as solid work surface)
- Heat lamp

MODELS

- HX15** – Field installed to: 1HG35, 1HG45, 2HG45F, 2HG65F, 4HG45F
- HX15S** – Field installed to: 1HF50, 2HF50F, 3HF50F, 4HF50F
- HX21** – Field installed to: 1HG65, 2HG65F, 3HG65F
- HX21S** – Field installed to: 1HG85, 2HG85F, 3HG85F, 1HF85, 2HF85F, 3HF85F
- HX21MS (with Mobile Filter Storage)** – Field installed to: All fryers, please note – width and depth may not match fryer

Specifications, Details and Dimensions on Reverse Side.



Frymate™ HX15
Shown with Heat Lamp accessory



Frymate™ HX21MS with Mobile Filter Storage
Shown with Heat Lamp accessory

HX SERIES FRYMATE™

HX SERIES FRYMATE™



701 S Ridge Avenue, Troy, OH 45374
1-888-4HOBART • www.hobartcorp.com

DETAILS AND DIMENSIONS

SPECIFICATIONS

These "Add On" accessory frymates can be securely attached to any gas or electric free-standing fryer or KleenScreen® Filter System fryer battery. "Add-On" a Frymate to the left or right side of a fryer, or both sides. Easy access storage area behind door.

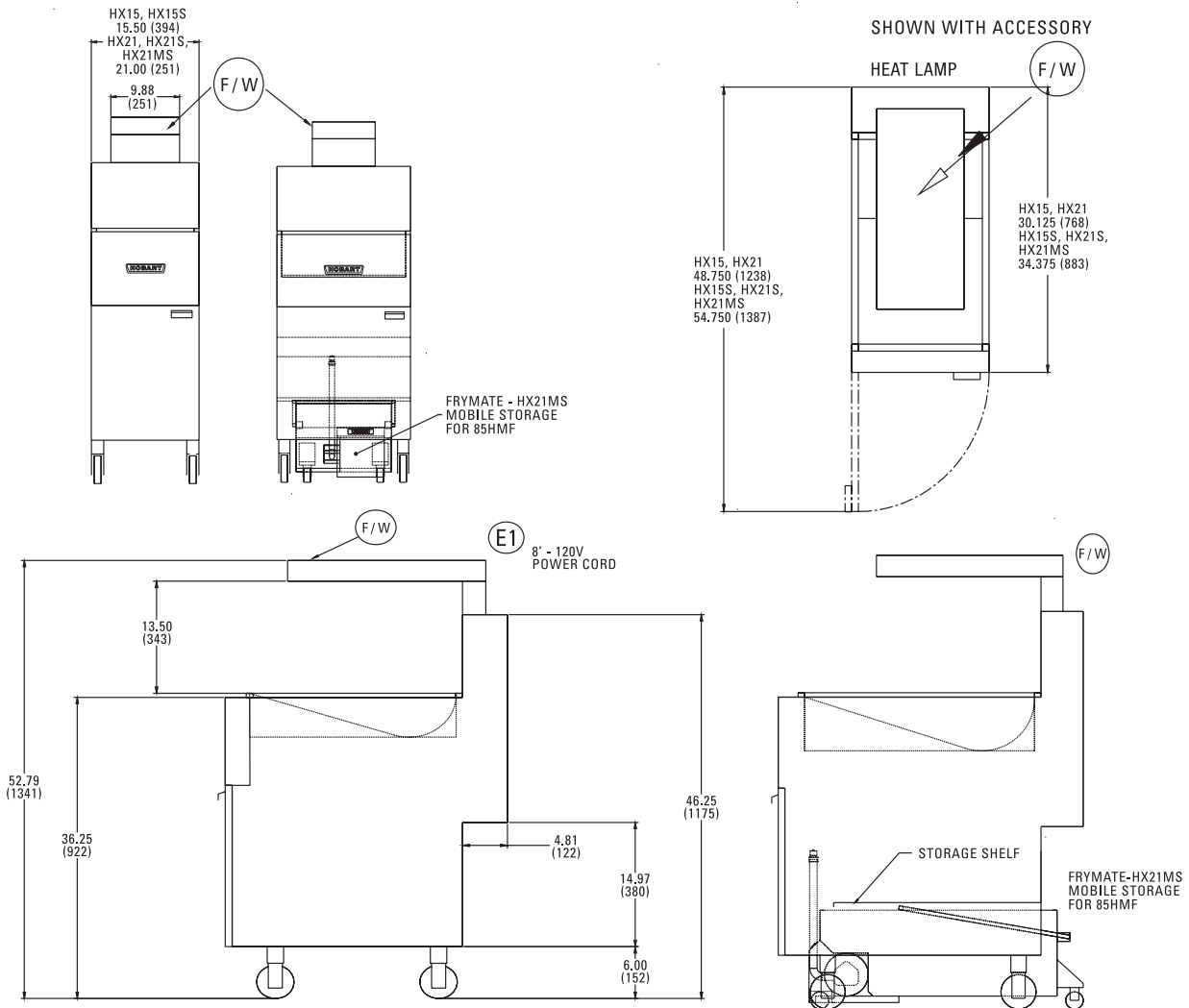
HX21MS has the same features as the HX21S with additional 20.75" x 23.63" stationary shelf plus the added convenience for a place to store the mobile filter 85HMF.

IMPORTANT

1. An adequate ventilation system is required for Commercial Cooking Equipment. Information may be obtained by writing to the National Fire Protection Association, Batterymarch Park, Quincy, MA 02269. When writing refer to NFPA No. 96.
2. This appliance is manufactured for commercial installation only and is not intended for home use.

SERVICE CONNECTIONS:

- E1** 8' 120 volt power cord supplied on optional heat lamp. 120/60/1 electrical connection, 48 1/4" from floor.



| MODEL | WIDTH | DEPTH | OVERALL HEIGHT | WORKING HEIGHT | CASTERS | LEGS | APPROX. SHIP. WT. |
|--------|--------|---------|----------------|----------------|---------|------|-------------------|
| HX15 | 15.50" | 30.125" | 46.25" | 36.25" | Yes | No | 122 lbs. |
| HX15S | 15.50" | 34.375" | 46.25" | 36.25" | No | Yes | 130 lbs. |
| HX21 | 21.00" | 30.125" | 46.25" | 36.25" | Yes | No | 165 lbs. |
| HX21S | 21.00" | 34.375" | 46.25" | 36.25" | Yes | No | 173 lbs. |
| HX21MS | 21.00" | 34.375" | 46.25" | 36.25" | Yes | No | 185 lbs. |

As continued product improvement is a policy of Hobart, specifications are subject to change without notice.