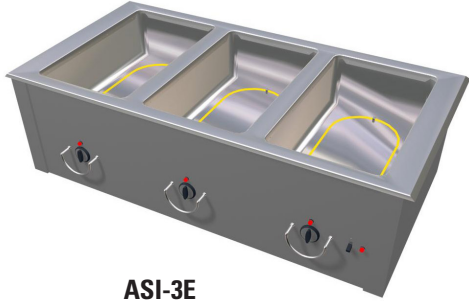




Your Solutions Partner

Specifications

F.O.B Sedalia, Missouri 65301



ASI-3E

OPTIONS:

- 3 phase wiring (except **ADI-1E**)
- 1,000 watt element (not available on 120V 5- and 6-well units)
- Glass display shelves - **98x Series**
- Serving shelves - **956/956-460-x Series**
- Buffet shelves - **83x, 93xIFL, 93xHT, 93xBL**
- Self-service canopies - **TS530-xx, TS530-xx-1SN**
- Stainless spillage pans - **676**
- Telescope covers - **548, 546**
- Hardwood carving board - 445W**
- S/S carving surface - 445-S**
- Removable S/S carving station - **CS-2**
- Adapter Plates - **31, 32, 33**
- Drop-in style top rim

AGENCY LISTING:



DUKE MANUFACTURING CO.
2305 N. Broadway
St. Louis, MO 63102

800.735.3853 Toll Free
314.231.5074 Fax
www.dukemfg.com

Approval Stamp(s):

PRODUCT INFORMATION:

PROJECT: _____

ITEM: _____

QUANTITY: _____

MODEL:

Slide-In Hot Food - Electric

- | | |
|----------------------------------------|---------------------------------|
| <input type="checkbox"/> ASI-1E | 18-1/4" L x 23-1/2W" x 12-3/4"H |
| <input type="checkbox"/> ASI-2E | 32-1/4" L x 23-1/2W" x 12-3/4"H |
| <input type="checkbox"/> ASI-3E | 46-1/4" L x 23-1/2W" x 12-3/4"H |
| <input type="checkbox"/> ASI-4E | 60-1/4" L x 23-1/2W" x 12-3/4"H |
| <input type="checkbox"/> ASI-5E | 74-1/4" L x 23-1/2W" x 12-3/4"H |
| <input type="checkbox"/> ASI-6E | 88-1/4" L x 23-1/2W" x 12-3/4"H |

TOP RIM:

- Heavy gauge, 300 Series stainless steel
- Die-stamped openings - 12-1/16" x 20-1/16"
- 15/16" overhang on back and ends
- Reinforced rim
- Vinyl foam gasket as sealant

HEAT COMPARTMENTS:

- 8" deep stainless steel liner, dry operation
- 750 watt exposed element in each compartment
- Voltage/Phase
 - 120 Volt/1 Ph
 - 208 Volt/1 Ph
 - 240 Volt/1 Ph
- Insulated bottom
- Individual thermostat controls and indicator lights
- Master control switch and knob guards
- Includes #576 aluminum spillage pans - each well

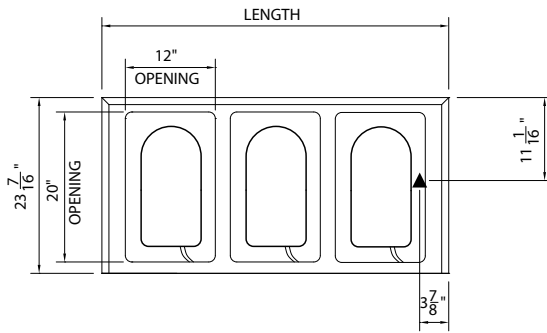
EXTERIOR HOUSING

- Heavy gauge paint grip steel on one side and both ends
- Stainless steel operator's side

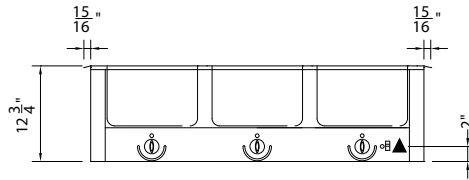
SHORT FORM SPECIFICATIONS:

Duke Slide-In - Hot Food - Electric. Top rim to be constructed of heavy gauge, 300 Series stainless steel with 15/16" overhang on back, and ends with operator's side turned down. Rim to be reinforced with heavy gauge steel angle and provided with vinyl foam gasket as sealant with top surface. Top shall be provided with die-stamped openings, each measuring 12-1/6" x 20-1/6" front to back. Heat compartments shall have die-formed, 8" deep liners, fabricated of stainless steel and insulated on all four sides, bottom and between sections with 1" fiberglass. Each compartment to have 750 watt element fitted inside warming compartment, above insulated bottom. Unit to be wired to operate on 120, 208 or 240 volts, as specified, with single phase standard for hard wired in field only. Three phase available. Thermostat controls. Exterior to be of heavy gauge steel on one side and both ends. Operator's side to be heavy gauge stainless steel.

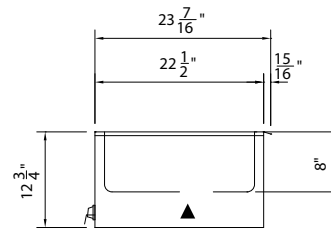
Duke®



ASI-3E UNIT SHOWN
TOP VIEW



FRONT VIEW



RIGHT SIDE VIEW

SLIDE-IN HOT FOOD - ELECTRIC

- **ASI-1E** 18-1/4"L x 23-1/2"W" x 12-3/4"H
- **ASI-2E** 32-1/4"L x 23-1/2"W" x 12-3/4"H
- **ASI-3E** 46-1/4"L x 23-1/2"W" x 12-3/4"H
- **ASI-4E** 60-1/4"L x 23-1/2"W" x 12-3/4"H
- **ASI-5E** 74-1/4"L x 23-1/2"W" x 12-3/4"H
- **ASI-6E** 88-1/4"L x 23-1/2"W" x 12-3/4"H

LEGEND

▲ - ELECTRICAL CONNECTION

DIMENSIONS:

FREIGHT CLASS: 100

Model	Length		Width		Height		Top Openings	Cutout Length		Cutout Width		Cube ft. Crated	Weight	
	in.	cm	in	cm	in	cm		in.	cm	in.	cm		lbs.	kg.
ASI-1E	18-1/4	46.4	23-1/2	59.7	12-3/4	32.4	1	17	43.2	23	58.4	8.0	43	19.6
ASI-2E	32-1/4	81.9	23-1/2	59.7	12-3/4	32.4	2	31	78.7	23	58.4	12.6	75	34.1
ASI-3E	46-1/4	117.5	23-1/2	59.7	12-3/4	32.4	3	45	114.3	23	58.4	17.3	90	40.9
ASI-4E	60-1/4	153.0	23-1/2	59.7	12-3/4	32.4	4	59	149.9	23	58.4	21.9	115	52.3
ASI-5E	74-1/4	188.6	23-1/2	59.7	12-3/4	32.4	5	73	185.4	23	58.4	26.5	140	63.6
ASI-6E	88-1/4	224.2	23-1/2	59.7	12-3/4	32.4	6	87	221.0	23	58.4	31.3	220	100.0

ELECTRICAL SPECIFICATIONS: (Consult factory for 3-phase electrical requirements and other options.)

Model	120 Volt/750 Watt		208 Volt/750 Watt		240 Volt/750 Watt	
	watts	amps	watts	amps	watts	amps
ASI-1E	750	6.2	900	3.6	1200	3.1
ASI-2E	1500	12.5	1500	7.2	1500	6.3
ASI-3E	2250	18.8	2250	10.8	2250	9.4
ASI-4E	3000	25.0	3000	14.4	3000	12.5
ASI-5E	3750	31.3	3750	18.0	3750	15.7
ASI-6E	N/A	N/A	4500	21.6	4500	18.8

DUKE MANUFACTURING CO.

2305 N. Broadway
St. Louis, MO 63102

800.735.3853 Toll Free
800.231.1130 In Missouri
314.231.5074 Fax
www.dukemfg.com



Specification subject to change