



Specifications

F.O.B Sedalia, Missouri 65301



HB3ST

OPTIONS:

- Dish dispenser cutouts (dispensers not included)- **HBST-MOD**
- Internal locking device
- Utility cutouts in top
- Heritage laminated trayslides
- 1-color laminate on body/second color laminate on tray slide - **HBMODA1**
- Laminate finish other than standard eight (8) finishes - **HBMODA2**
- Enclosed storage - **HBMODB1**
- Intermediate shelf - **HBMODB3**
- Designer food shields (**TS Series**)
- Glass display shelves (**98x Series**)
- Buffet shelves (**83x, 93x Series**)
- Serving shelves (**956-x, 956-460 - x Series**)
- Lights in canopy - **HB-50**
- Heat/lights in canopy - **HB-60**
- Kickplates - **HBMODH1** (stainless) /**HBMODH2** (painted)/ **HBMODH3** (laminate to match body)
- Solid trayslides
- 3-bar trayslides
- Bread and cheese board - **HBMODJ1**
- End shelf
- Legs in lieu of casters

AGENCY LISTING:



DUKE MANUFACTURING CO.
2305 N. Broadway
St. Louis, MO 63102

800.735.3853 Toll Free
314.231.5074 Fax
www.dukemfg.com

Approval Stamp(s):

PRODUCT INFORMATION:

PROJECT: _____
 ITEM: _____
 QUANTITY: _____

MODEL:

Heritage Buffet
Solid Top

- HB2ST** 32" length unit
- HB3ST** 46" length unit
- HB4ST** 60" length unit
- HB5ST** 74" length unit

TOP:

- 16 gauge, 300 Series stainless steel
- Flanged down 2" on all four (4) sides

BODY:

- Heavy gauge paint grip steel
- Laminate patters:
 - Beige Grafix - **HB-01**
 - Oxide - **HB-04**
 - Fallen Leaves - **HB-07**
 - Chestnut Burl - **HB-11**
 - Stellar - **HB-03**
 - Northern Oak - **HB-06**
 - Azul Granie - **HB-13**
 - Amber Maple - **HB-12**
- Stainless steel trim strips on corners
- Flanged and channeled edges for strength
- Welded together with reinforcements
- 6" cord and plug
- Mounted on NSF listed 5" diameter swivel casters, two with locks, all non-marking polyurethane tires

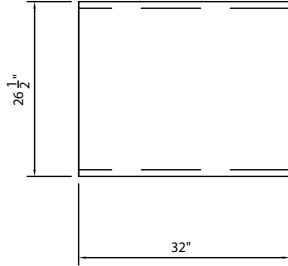
SHORT FORM SPECIFICATIONS:

Duke Heritage Buffet - Solid Top Top shall be constructed of 16 gauge 300 Series stainless steel with edges flanged down 2" on all four sides. Body shall be heavy gauge paint grip steel with option of eight (8) laminate patterns. Stainless steel trim strips on corners of body panels. NSF listed casters, 5" diameter, polyurethane, swivel-type, two with locks, all non-marking tires, shall be furnished.

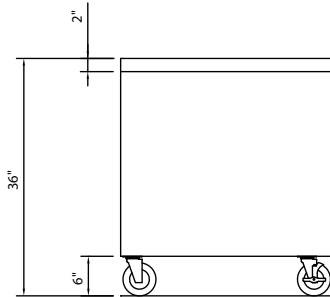
HERITAGE[®]

FROM **DUKE**

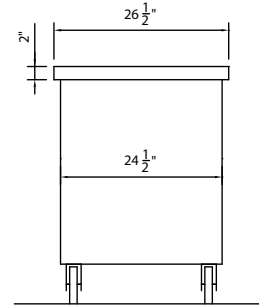
HERITAGE BUFFET SOLID TOP	
<input type="checkbox"/> HB2ST	32" length unit
<input type="checkbox"/> HB3ST	46" length unit
<input type="checkbox"/> HB4ST	60" length unit
<input type="checkbox"/> HB5ST	74" length unit



TOP VIEW



FRONT VIEW



RIGHT SIDE VIEW

DIMENSIONS:

FREIGHT CLASS: 150

Model	Length		Width		Height		Cube ft. crated	Weight	
	in.	cm	in.	cm	in.	cm		lbs	kg
HB2ST	32	81.3	26-1/2	67.3	36	91.4	26.3	250	113.6
HB3ST	46	116.8	26-1/2	67.3	36	91.4	36.0	380	172.7
HB4FT	60	152.4	26-1/2	67.3	36	91.4	45.7	550	250.0
HB5FT	74	188.0	26-1/2	67.3	36	91.4	55.4	640	290.0



DUKE MANUFACTURING CO.

2305 N. Broadway
St. Louis, MO 63102

800.735.3853 Toll Free
800.231.1130 In Missouri
314.231.5074 Fax
www.dukemfg.com

Specification subject to change