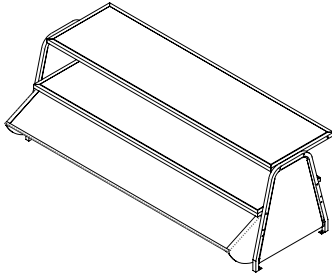




Your Solutions Partner

# Specifications

F.O.B Sedalia, Missouri 65301



982

### OPTIONS:

- Fluorescent Lights (FL)
- Guard on both sides
- Special lengths
- Special guards
- Powder coat painted finishes

**Approval Stamp(s):**

### PRODUCT INFORMATION:

PROJECT: \_\_\_\_\_

ITEM: \_\_\_\_\_

QUANTITY: \_\_\_\_\_

**MODEL:** Foodshield - Glass Display Shelves - 16"W

Fits: Aero-hot & Thurmaduke Steamtables, Heritage, Economate, Aeroserv Serving Systems

- 982
- 983
- 984 Deluxe Glass Display Shelves
- 985
- 986

### SHELVES:

- 1/4" tempered glass shelves
- Shelves hold pre-packaged products

### FRAMES:

- 3/4" square stainless steel tube with welded corners

### GUARDS:

- Glass guards mounted on adjustable stainless brackets with exposed glass edges bound in stainless channels
- Self-service one sided style
- Clear acrylic enclosures both ends

### SIZES:

- All units available in following lengths  
30-1/8", 44-1/8", 58-1/8", 72-1/8", 86-1/8"

### Agency Listings:



**DUKE MANUFACTURING CO.**  
**2305 N. Broadway**  
**St. Louis, MO 63102**

**800.735.3853 Toll Free**  
**314.231.5074 Fax**  
**www.dukemfg.com**

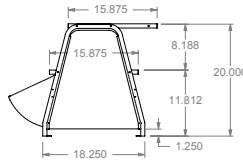
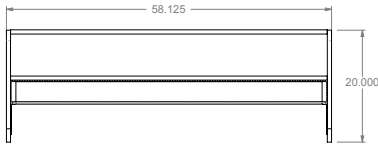
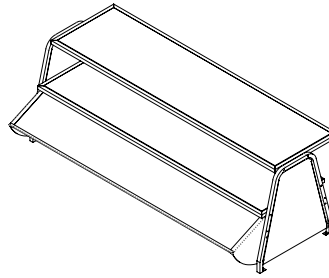
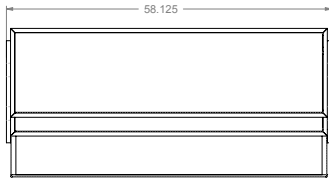
### SHORT FORM SPECIFICATIONS:

**Foodshield -98x Series** The **98x Series** of glass display shelves shall be 16" wide and have glass set in a rectangular frame made of 3/4" square stainless steel tubing. Glass to be flush with the top of the frame. Upright supports shall be formed, 3/4" square stainless steel tubular brackets. The top shelf on the **98x Series** extends 20" above counter top with bottom shelf located 8" below top shelf. Sneeze guards to be mounted on adjustable stainless steel brackets with exposed glass edges bound in stainless steel channels. When shelves with light are mounted to unit, Unit may not be UL listed.

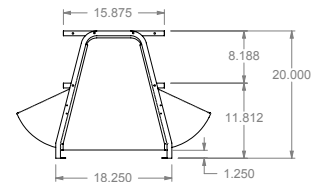
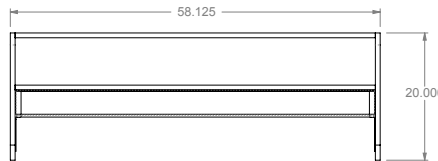
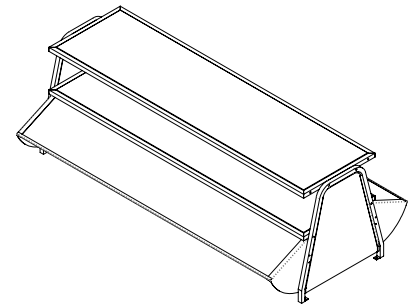
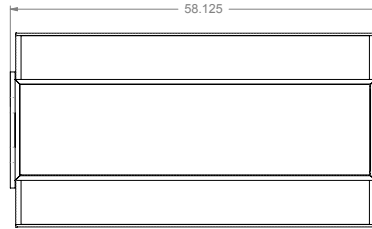
**NSF Updates:** (1) Removed upper guard (2) Changed lower bracket height and added radius (3) Changed height on end guard (4) Added new label to upper shelf.

**FOODSHIELD - SHELVES**

- 982
- 983
- 984      Glass Display Shelves
- 985
- 986



**ONE SIDE**



**BOTH SIDES**

DIMENSIONS:  
 Deluxe Glass Display Shelves - All units 20"/50.8cm above counter surface      Freight Class: 100

Model	Length		Width		Cube ft. Crated	Weight	
	in.	cm	in.	cm		lbs.	kg
<b>982</b>	30-1/8	76.5	16	40.6	11.8	50	22.7
<b>983</b>	44-1/8	112.1	16	40.6	16.3	65	29.6
<b>984</b>	58-1/8	147.6	16	40.6	20.1	80	36.4
<b>985</b>	72-1/8	183.2	16	40.6	27.0	100	45.5
<b>986</b>	86-1/8	218.8	16	40.6	30.3	125	56.8



**DUKE MANUFACTURING CO.**

2305 N. Broadway  
 St. Louis, MO 63102

800.735.3853 Toll Free  
 314.231.1130 In Missouri  
 314.231.5074 Fax  
[www.dukemfg.com](http://www.dukemfg.com)

Specification subject to change