



# Specifications

F.O.B St. Louis, Missouri 63102



**FWM34-22**

### OPTIONS:

- Interchangeable plastic lids designed for product flexibility
- Amber pans allows for visibility to easily check on inventory status
- 4" deep pans
- Single or double handled pans

### AGENCY LISTING:



**DUKE MANUFACTURING CO.**  
 2305 N. Broadway  
 St. Louis, MO 63102

**800.735.3853 Toll Free**  
**314.231.5074 Fax**  
**www.dukemfg.com**

### Approval Stamp(s):

### PRODUCT INFORMATION:

PROJECT: \_\_\_\_\_

ITEM: \_\_\_\_\_

QUANTITY: \_\_\_\_\_

MODEL:

### Product Holding Unit - FWM

- FWM34-22            2 down, 2 across
- FWM34-23            2 down, 3 across
- FWM34-24            2 down, 4 across
- FWM34-42            4 down, 2 across
- FWM34-43            4 down, 3 across

### BODY:

- Stainless Steel Exterior construction for durability and ease of construction
- Anodized aluminum surface durable and easily cleaned
- Fully radiused curved corners that are easily cleaned
- No removable parts or screws or fasteners to clean around
- Cool to the touch thermoplastic front panel
- Interchangeable plastic lids designed for product flexibility
- Amber pans allows for visibility to easily check on inventory status

### HEATING:

- Flexible 300 Watt heaters for 208/ 230/ 240 volt
- Flexible 200 Watt heaters for 120 volt
- Individually controlled rows for customized heating solutions
- Quick heat up approximately 15 minutes

### CONTROLS

- Ability to control different day parts
- Web based programming
- Upload programs through USB port no manager reprogramming necessary
- Automatic pan linkability for product freshness
- Timer to ensure no expired product is to be served
- Simplistic timer system makes it easy for employees to use and easy to manage
- Alphanumeric displays are easy to read

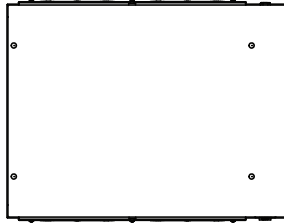
### SHORT FORM SPECIFICATIONS:

**Duke Product Holding Units** - Thermostatically controlled heaters surround extruded aluminum for consistent heating of pre-cooked food. Body shall be constructed of stainless steel with cool-to-touch thermostatic front panel. Interchangeable, high-temperature lids control the product environment. Alphanumeric displays and web based programming track product hold times and temperatures.

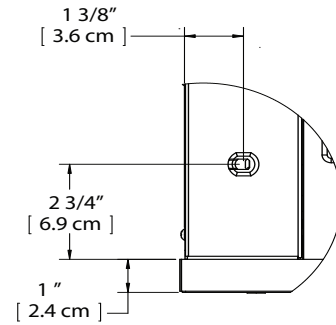
# Duke®

## PRODUCT HOLDING UNIT

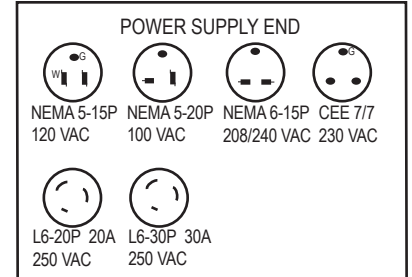
■ FWM34-22	2 down, 2 across
■ FWM34-23	2 down, 3 across
■ FWM34-24	2 down, 4 across
■ FWM34-42	4 down, 2 across
■ FWM34-43	4 down, 3 across



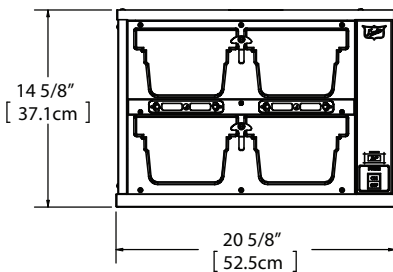
TOP



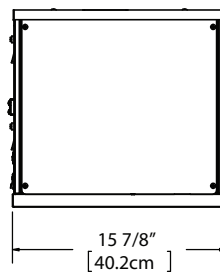
All except FWM34-42, FWM34-43 (cord on top)



6 FT. POWER CORD DETAIL



FRONT



END

DIMENSIONS:

FREIGHT CLASS: 100

Model	Height		Width		Depth		Pan Size						Cube ft. crated	Crated ShipWeight	
	in.	cm	in.	cm	in.	cm	L		W		H			lbs.	kg
							in.	cm	in.	cm	in.	cm			
FWM34-22	15	38.10	21	53.34	16	40.2	12.6	32.0	6.85	17.4	4	10.2	6.6	91	41.3
FWM34-23	15	38.10	29	73.66	16	40.2	12.6	32.0	6.85	17.4	4	10.2	8.3	113	51.3
FWM34-24	15	38.10	37	93.98	16	40.2	12.6	32.0	6.85	17.4	4	10.2	10.2	141	63.9
FWM34-42	33	83.82	19	48.26	16	40.2	12.6	32.0	6.85	17.4	4	10.2	7.9	145	65.8
FWM34-43	33	119.38	27	88.90	16	55.88	12.6	32.0	6.85	17.4	4	10.2	20.9	210	95.3

ELECTRICAL SPECIFICATIONS:

Model	120 Volt - HZ 50/60			208 Volt - HZ 50/60			230 Volt - HZ 50/60		
	Watts	Amps	NEMA	Watts	Amps	NEMA	Watts	Amps	CEE
FWM34-22	800	6.7	5-15P	1200	5.8	6-15P	1200	5.2	7.7
FWM34-23	1200	10.0	5-15P	1800	8.7	6-15P	1800	7.8	7.7
FWM34-24	1600	13.3	5-15P	2400	11.5	6-15P	2400	10.4	7.7
FWM34-42	1600	13.3	5-15P	2400	11.5	L6-20P	2400	10.4	L6-20 NEMA
FWM34-43	-	-	-	3600	17.3	L6-30P	3600	15.7	-

DUKE MANUFACTURING CO.

2305 N. Broadway  
St. Louis, MO 63102



800.735.3853 Toll Free  
800.231.1130 In Missouri  
314.231.5074 Fax  
www.dukemfg.com

Patent Info:  
US 6175099; US 6262394; US RE 40, 290; SG 83896;  
CN ZL00805894.6; SK 0509521; EP 1164852; CA 2,367,679  
Other U.S. and Foreign Patents Pending

Specification subject to change