



Specifications

F.O.B Sedalia, Missouri 65301



ADI-3ISL

OPTIONS:

- Hot food style top - HFST
- Sectional false bottom - FB
- Globe valve and drain line
- Glass display shelves - 98x Series
- Buffet shelves - 83x, 93xFL, 93xHT, 93xBL
- Serving shelves - 956/956-460 - x Series
- Self-service canopies - TS530-xx, TS530-xx-1SN
- Adapter panels - J & K
- Adapter bars - 513, 516 & 517

AGENCY LISTING:



DUKE MANUFACTURING CO.
 2305 N. Broadway
 St. Louis, MO 63102

800.735.3853 Toll Free
 314.231.1130 In Missouri
 314.231.5074 Fax
 www.dukemfg.com

Approval Stamp(s):

PRODUCT INFORMATION:

PROJECT: _____
 ITEM: _____
 QUANTITY: _____

MODEL:

Drop-Ins - Slimline
Cold Pan - Ice Cooled - 5" Deep

- ADI-1ISL (1) 5" Deep 12" x 20" pan
- ADI-2ISL (2) 5" Deep 12" x 20" pan
- ADI-3ISL (3) 5" Deep 12" x 20" pan

TOP RIM:

- Heavy gauge, 300 Series stainless steel
- 15/16" overhang on ends
- 7/8" overhang on front and back
- Reinforced with heavy gauge steel angle
- Vinyl foam gasket as sealant

LINER:

- Heavy gauge 300 Series stainless steel 5" deep
- Insulated on all four sides and bottom
- 11-7/8" front to back - 6" shorter than length of top
- 1" cast brass drain and plug
- Adapter bars for full size pans included

EXTERIOR HOUSING

- Heavy gauge paint grip steel

SHORT FORM SPECIFICATIONS:

Duke Drop-Ins - Slimline - Cold Pan - Ice Cooled - 5" Deep. Top rim shall be constructed of heavy gauge, 300 Series stainless steel with 15/16" overhang on ends and 7/8" overhang on front and back. Rim to be reinforced by heavy gauge steel angle and provided with vinyl foam gasket to act as sealant with top surface. Top shall be cut out, flanged down and attached to heavy gauge, 300 Series stainless steel interior liner, 5" deep. Liner shall be 11-7/8" front to back and 6" shorter than length of top. To be insulated on all four sides and bottom and equipped with 1" cast brass drain and plug. Unit shall be furnished with adapter bars for full size pans. Exterior housing shall be constructed of heavy gauge steel.

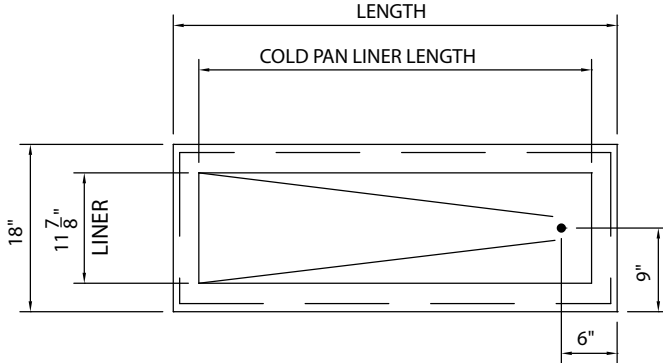
Duke®

MODEL:

Drop-Ins - Slimline

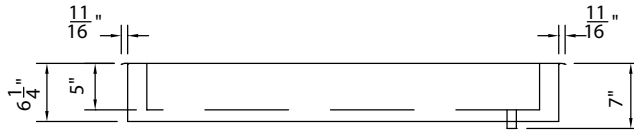
Cold Pan - Ice Cooled- 5" Deep

- ADI-1ISL (1) 5" Deep 12" x 20" pan
- ADI-2ISL (2) 5" Deep 12" x 20" pan
- ADI-3ISL (3) 5" Deep 12" x 20" pa

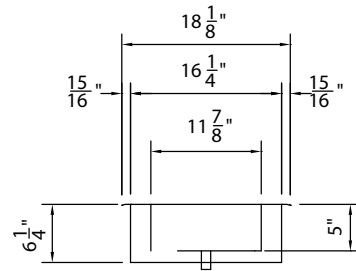


ADI-2ISL UNIT SHOWN

TOP VIEW



FRONT VIEW



RIGHT SIDE VIEW

LEGEND	
●	- DRAIN CONNECTION

DIMENSIONS - Liners are 11-7/8" (30.3cm) W; cutouts 16-5/8" (42.3cm) W

FREIGHT CLASS: 100

Model	Length		Width		Height		Cube ft crated	Adapter Bars	Weight		Cold Pan - L		Cutout - L	
	in.	cm	in	cm	in	cm			in.	cm	in.	cm	in.	cm
ADI-1ISL	26-1/4	66.7	18	45.7	6-1/4	15.9	5.9	0	70	31.8	20-1/4	51.4	25	63.5
ADI-2ISL	48-1/4	122.6	18	45.7	6-1/4	15.9	9.6	1	100	45.5	42-1/4	107.3	47	119.4
ADI-3ISL	70-1/4	178.4	18	45.7	6-1/4	15.9	13.8	2	135	61.4	64-1/4	163.2	69	175.3

REMOTE CONTROL CUTOUT IS 4-1/8" H X 2-3/16" W



DUKE MANUFACTURING CO.

2305 N. Broadway
St. Louis, MO 63102

800.735.3853 Toll Free
800.231.1130 In Missouri
314.231.5074 Fax
www.dukemfg.com

Specification subject to change

01/10
Printed in U.S.A
© 2010, Duke Manufacturing Co.