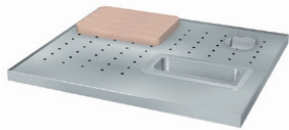




Specifications

F.O.B Sedalia, Missouri 65301



CS-2



576

Spillage Pans

676



Adapter Plates

AGENCY LISTINGS:



DUKE MANUFACTURING CO.
 2305 N. Broadway
 St. Louis, MO 63102

800.735.3853 Toll Free
 314-231-1130 In Missouri
 314.231.5074 Fax
 www.dukemfg.com

Approval Stamp(s):

PRODUCT INFORMATION:

PROJECT: _____
 ITEM: _____
 QUANTITY: _____

MODEL:

Drop-Ins

Accessories/Options

- CS-2** Carving Station
- 576** Spillage Pan - aluminum
- 676** Spillage Pan - stainless steel
- 31** Adapter Plate
- 32** Adapter Plate
- 33** Adapter Plate
- FB** False Bottom - not shown
- HFST** Hot Food Style Top - not shown

CARVING STATION:

- Removable, recessed, perforated stainless steel top - must use spillage pans
- Carving board
- 1/4 size au jus pan
- Meat spike

SPILLAGE PANS:

- **576** Aluminum
- **676** Stainless Steel

ADAPTER PLATES (for hot food units)

Available in the following configurations:

- **31** (3) 6-1/2" diameter cutouts
- **32** (2) 8-1/2" cutouts
- **33** (1) 6-1/2" and one 10-1/2" cutout

FALSE BOTTOM (now shown)

- **FB** 1/2" deep sectional false bottom

HOT FOOD STYLE TOP (not shown)

- **HFST** Beaded 12-1/16" x 20-1/16" openings in top - not available on NSF Standard 7 units

SHORT FORM SPECIFICATIONS:

Duke Drop-Ins - Accessories.

Carving Station to have removable, recessed, perforated stainless steel top (must use spillage pans), carving board, 1/4 size au jus pan and meat spike.

Spillage Pans. #576 is aluminum, measuring 12" x 20" x 6-1/4"D; #676 is stainless steel, measuring 12" x 20" x 6-1/4"D.

Adapter Plates. #31 to have (3) 6-1/2" openings; #32 to have (2) 8-1/2" openings and #33 to have (1) 10-1/2" and (1) 6-1/2" openings

False Bottom (FB): For Cold Pan Units. 1/2" deep, sectional, stainless steel.

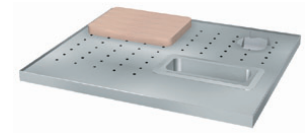
Hot Food Style Top (HFST): Beaded 12-1/16" x 20-1/16" openings in top - not available on NSF standard 7 units.

DROP-INS -ACCESSORIES/OPTIONS

- CS-2** Carving Station
- 576** Spillage Pan - aluminum
- 676** Spillage Pan - stainless steel
- 31** Adapter Plate
- 32** Adapter Plate
- 33** Adapter Plate
- FB** False Bottom - not shown
- HFST** Hot Food Style Top - not shown

CARVING STATION:

- Removable, recessed, perforated stainless steel top - must use spillage pans
- Carving board
- 1/4 size au jus pan
- Meat spike



CS-2

SPILLAGE PANS:

- **576** Aluminum
- **676** Stainless Steel

576



ADAPTER PLATES (for hot food units)

Available in the following configurations:

- **31** (3) 6-1/2" diameter cutouts
- **32** (2) 8-1/2" cutouts
- **33** (1) 6-1/2" and one 10-1/2" cutout



676

Spillage Pans

FALSE BOTTOM (now shown)

- **FB** 1/2" deep sectional false bottom

HOT FOOD STYLE TOP (not shown)

- **HFST** Beaded 12-1/16" x 20-1/16" openings in top - not available on NSF Standard 7 units



Adapter Plates



DUKE MANUFACTURING CO.

2305 N. Broadway
St. Louis, MO 63102

800.735.3853 Toll Free
800.231.1130 In Missouri
314.231.5074 Fax
www.dukemfg.com

Specification subject to change

01/10
Printed in U.S.A
© 2010, Duke Manufacturing Co.