



Specifications

F.O.B Sedalia, Missouri 65301



309

Approval Stamp(s):

PRODUCT INFORMATION:

PROJECT: _____

ITEM: _____

QUANTITY: _____

MODEL:

**Aerohot™ Steamtables
Solid Top Units**

- 309/P309 44-3/8" length unit
- 310/P310 58-3/8" length unit
- 311/P311 72-3/8" length unit

TOP:

- 20 gauge, 300 Series stainless steel
- Reinforced with angled cross members
- Poly carving board - 7"W x 1/2" thick with 18 gauge stainless steel support base and die-stamped brackets

BODY, UNDERSHELF AND LEGS:

- 20 gauge, 430 Series stainless steel body
- 20 gauge, 430 Series stainless steel undershelf
- 430 Series stainless steel tubular legs with adjustable plastic feet

OPTIONS:

- Hardwood cutting board in lieu of poly
- Stainless steel cutting board in lieu of poly
- Drop type brackets for cutting board
- Casters - **Pxxx**
- Stainless steel feet - **SS-FEET**
- Serving shelves - **656-x,S, 656-460-xS, 956-xS, 956-460-xS**
- Glass display shelves - **98x**
- Shelves/Carving boards - **441-xS, 442-xS, 445-xS**
- Buffet shelves - **63x/73xFL/73xBL/73xHT/83x/93xFL/83xBL/93xHT**
- Tubular tray slides - **3BTS-FX-x/HD-x**
- Solid stainless tray slide - **SOLID-FX/HD**

AGENCY LISTINGS:



DUKE MANUFACTURING CO.
2305 N. Broadway
St. Louis, MO 63102

800.735.3853 Toll Free
314.231.5074 Fax
www.dukemfg.com

SHORT FORM SPECIFICATIONS:

Duke Aerohot™ Steamtables - Solid Top Units Top shall be constructed of 20 gauge 300 Series stainless steel , reinforced by angled cross members. A poly carving board, 7" wide and 1/2" thick, mounted on operator's side, on fabricated heavy gauge stainless steel base and brackets shall be provided. Body, undershelf and legs shall be of heavy gauge, 430 Series stainless steel. Portable units to have NSF listed casters, 5" diameter, rubber, swivel-type, two with locks, all non-marking tires, with 9" L pusher bar attached to end panel on operator's right.

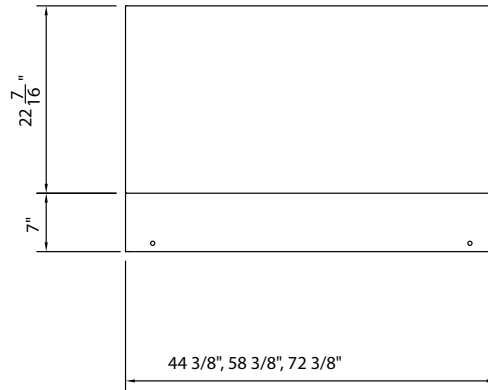
"P" - prefix on model number denotes portable unit.

Aerohot

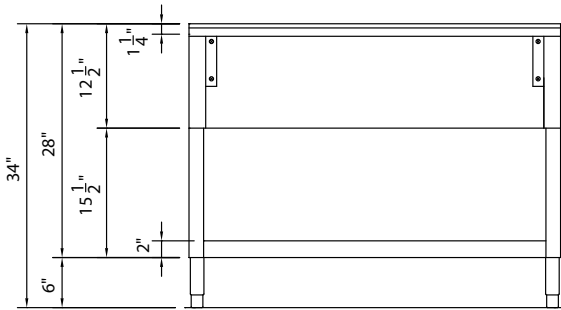
MODEL:
Aerohot™ Steamtables
Solid Top Units

- 309/P309** 44-3/8" length unit
- 310/P310** 58-3/8" length unit
- 311/P311** 72-3/8" length unit

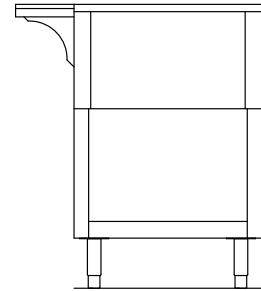
LEGEND
"P" = prefix on model number denotes portable unit



TOP VIEW



FRONT VIEW



RIGHT SIDE VIEW

DIMENSIONS:

FREIGHT CLASS: 85

Model	Length		Width		Height		Cube ft. Crated	Weight	
	in.	cm	in.	cm	in.	cm		lbs.	kg
309/P309	44-3/8	112.8	22-7/16	57.1	34	86.4	32.5	105/107	47.7/48.6
310/P310	58-3/8	148.3	22-7/16	57.1	34	86.4	41.5	127/129	57.7/58.6
311/P311	72-3/8	183.9	22-7/16	57.1	34	86.4	50.5	158/160	71.8/72.7

Power Supply: n/a



DUKE MANUFACTURING CO.
 2305 N. Broadway
 St. Louis, MO 63102

800.735.3853 Toll Free
 800.231.1130 In Missouri
 314.231.5074 Fax
www.dukemfg.com

Specification subject to change